



# GENESIS™

KIOSK RANGE



[www.glasdon.com](http://www.glasdon.com)

# GENESIS™

## KIOSK RANGE

Genesis kiosks are a range of high quality buildings which are available off the shelf for quick delivery. These stylish kiosks come as standard in four layouts and are ideally suited to a variety of locations and applications such as ticket sales kiosk, vending booth or security building.

A basic range of optional extras are available, including the use of vinyl graphic to personalise your kiosk for a more unique building.

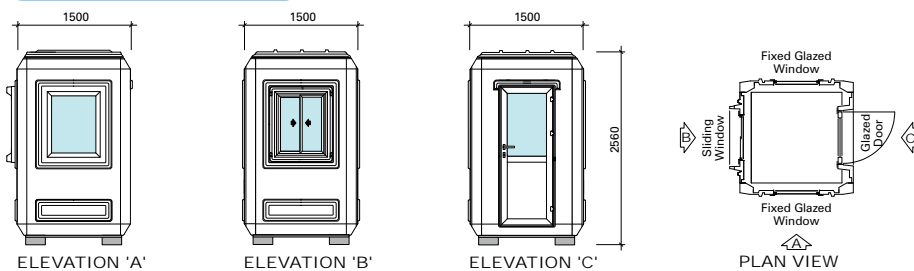
### Standard Buildings

- A range of four small buildings built to a fixed specification.
- High quality materials at a budget-conscious cost.
- Normally available from stock to satisfy urgent requirements.
- Free delivery to mainland UK.



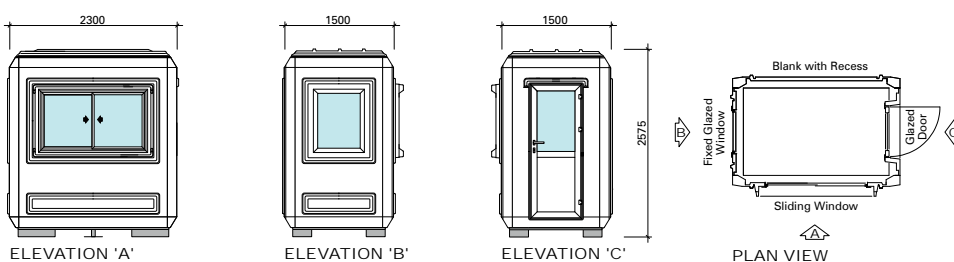
2.3 x 1.5m Model

### 1.5 x 1.5m Model



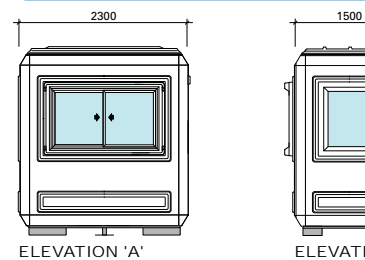
Weight: 290kg

### 2.3 x 1.5m Model

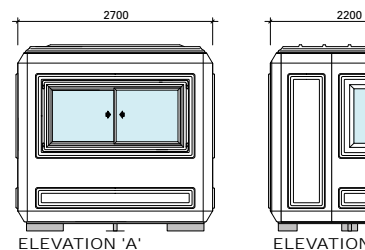


Weight: 400kg

### 2.3 x 1.5m Model Double



### 2.7 x 2.2m Model



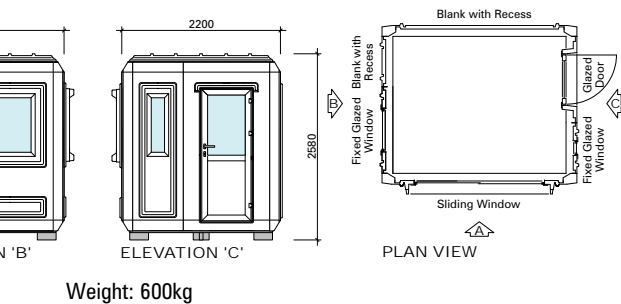
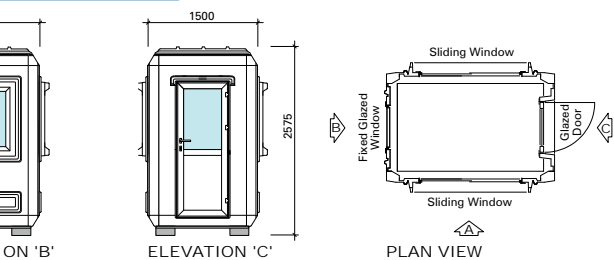


1.5 x 1.5m Model



2.7 x 2.2m Model

Sliding Windows



1.5 x 1.5m Model

## Technical Information

**Panel Composition:** External and internal pigmented gelcoat backed with flame-retardant GRP laminate either side of a core of particle board and flame-retardant foam insulation as relevant to each panel.

**Roofs:** Insulated as standard and manufactured in one piece.

**Floors:** Textured Tulsa mesh grip surface on 18mm phenolic faced plywood board.

**Glazing:** Toughened safety glass.

**Doors:** Right hand hung aluminium door with Europrofile cylinder mortice lock.

**Colour:** Standard White\*

### Base Requirements:

1.5 x 1.5m kiosk - 1400 x 1400 x 125mm

2.3 x 1.5m kiosk - 2200 x 1400 x 125mm

2.7 x 2.2m kiosk - 2600 x 2100 x 125mm

**Base Fixing:** Base fixing by the customer is achieved using the anchor bolts. Refer to the instructions supplied with the fixings for correct installation in accordance with the manufacturer recommendations.

\*Disclaimer: Please note while colour listed is Standard White, variations in shade may be encountered.

## Optional Extras

**Electrics:** A standard electrical kit consisting of fluorescent light fitting with diffuser, light switch and double 13 amp switched plug point, all wired to consumer unit c/w RCD ready to receive mains supply.

**Additional Double Socket:** An additional double 13 amp switched plug point.

**Data Socket:** An unwired data socket ready for local connection to telecoms networks.

**External Power Intake Socket:** A standard 32 amp external power intake socket installed through the wall panel, more suitable for portable applications where cables are not permanent.

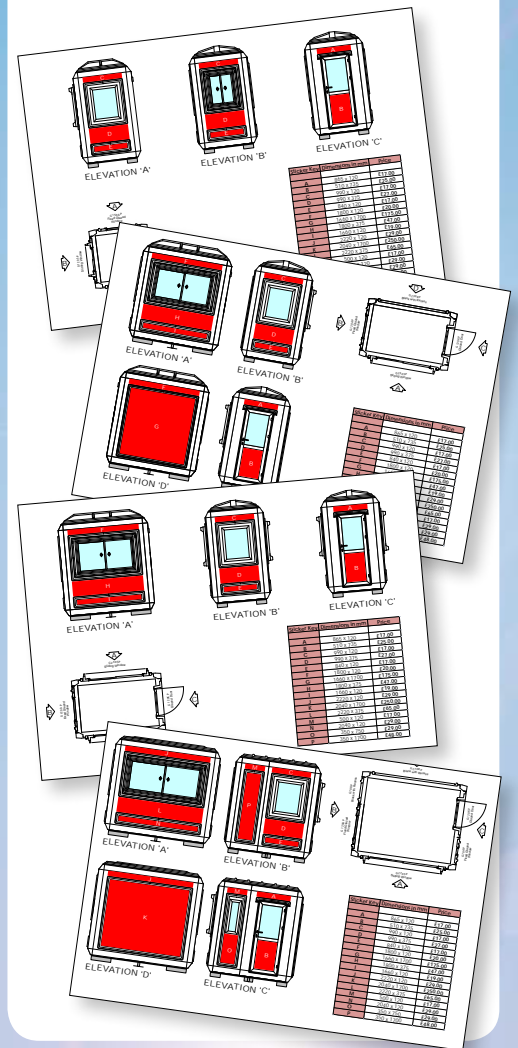
**Heater:** A 0.75kw manual panel convector heater for wall mounting, wired integrally to a fused switch.

**Worktops:** 30mm grey laminate-faced chipboard, 300mm wide, with varied lengths as per kiosk requirements.

*Please note, when stock is available, lead times are between 7 and 14 days from receipt of order or artwork approval (if personalisation is required). However, if stock is not available a lead time of up to 8 weeks can be expected. Our Sales Office will inform you of expected delivery times when your order is placed.*

## Personalisation Options

Genesis kiosk can be personalised in a variety of areas using your own logos, photographs or artwork. Please contact our Sales Office for more information.



## VISIT OUR WEBSITE

[www.glasdon.com](http://www.glasdon.com)

Visit our website to see the full Glasdon product range which includes Litter Bins, Recycling Bins, Shelters, Buildings & Housings, Cigarette Bins, Winter Safety Equipment and more!

Let's get social...



01253 600418

@bh@glasdon-uk.co.uk



**Glasdon®**

**Glasdon U.K. Limited**  
Buildings & Housings Division  
Preston New Road  
BLACKPOOL  
Lancashire  
FY4 4UL

Tel: (01253) 600418  
Fax: (01253) 792558  
e-mail: bh@glasdon-uk.co.uk  
web: www.glasdon.com



Glasdon® and Genesis are trademarks or registered trademarks of GLASDON Group or its subsidiaries in the UK and other countries.

Glasdon Group Limited Is An Equal Opportunities Employer.  
© Glasdon UK Ltd. 01/2017. Glasdon reserve the right to alter price and specification without prior notice. LH/



When you have finished with this leaflet please recycle it

GT384/19