



# *Heritage*

Traditionally Styled Buildings

Welcome to Wellington College



[www.glasdon.com](http://www.glasdon.com)

# *Heritage*

The Heritage range of small buildings can help to create the best first impression.

With a striking appearance and a light and comfortable interior working environment Heritage can be tailored to suit your specific requirements.

Heritage is ideal for architectural and historical locations where conservation and enhancement are a priority.







Typical applications include:

- Security Buildings
- Tickets Sales Kiosks
- Gatehouses
- Guard Posts
- Vending Booths
- Offices



# Heritage Traditionally Styled Buildings

## PANELS Nominally 1.22m and 2.44m wide

 <b>HS1</b> Blank	 <b>HS2</b> Fixed Window	 <b>HS3</b> Horizontal Sliding Window	 <b>HS4</b> Top Hung Opening Window	 <b>HS5</b> Glazed Door
 <b>HD9</b> Blank	 <b>HD10</b> Fixed Window	 <b>HD11</b> Horizontal Sliding Window		

## BUILDING SIZES

### Nominal Internal Sizes (Length x Width)

#### 1.22m Widths

1.22 x 1.22m  
2.44 x 1.22m

#### 2.44m Widths

2.44 x 2.44m  
3.66 x 2.44m  
4.88 x 2.44m

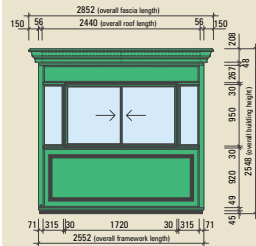
## COLOURS

### Standard Range

The external colour choice for the framework, moulded roof fascia & external face of the panel is Maroon RAL 3003, Dark Green RAL 6005, Black RAL 9005 and Dark Blue RAL 5003.

The decorative panel relief is normally highlighted in Gold, but can be identical to the panel colour.

## DIMENSIONS



 **Glasdon** is a registered trademark of GLASDON Group and its subsidiaries in the UK and other countries.

Glasdon Group Limited Is An Equal Opportunities Employer.

© Glasdon UK Ltd. 03/2017. Glasdon reserve the right to alter price and specification without prior notice.

PN/PNG

Visit our website to see the full range of buildings and housings.

[www.glasdon.com](http://www.glasdon.com)

Website screenshot showing the Glasdon logo, contact information (01253 600418, bh@glasdon-uk.co.uk), navigation menu, and product images including the Genesis Kiosk Range.



**Glasdon**®

**Glasdon U.K. Limited  
Buildings & Housings Division**

Preston New Road  
BLACKPOOL  
Lancashire  
FY4 4UL

Tel: (01253) 600418

Fax: (01253) 792558

e-mail: [bh@glasdon-uk.co.uk](mailto:bh@glasdon-uk.co.uk)

web: [www.glasdon.com](http://www.glasdon.com)



When you have finished with this leaflet please recycle it