

Highways Lighting Solutions

www.glasdon.com

Signmaster - The Bollard Ahead



NEW Signmaster™ Ultra
Rebound Bollard



Rebound Signmaster™
Bollard



Socketed Rebound
Signmaster™ Bollard



Solar Signmaster™
Rebound LED Bollard



Rebound Signmaster™
LED Bollard

Signmaster™ Range

We have been designing and manufacturing bollards for more than 40 years. Our versatile road safety solutions are used all over the highways and byways of the United Kingdom, and within our range, there is a bollard for every installation.

New to the range is Signmaster™ Ultra Rebound Bollard, a non-illuminated bollard that offers high grade reflectivity. Signmaster Ultra Bollard is unique to the Signmaster range with its body-to-base fixings giving improved passively safe credentials.

The Signmaster range includes illuminated, solar illuminated and non-illuminated bollards, with a wide choice of fixing, allowing you to highlight any potential hazards with the appropriate Signmaster bollard for your needs.

✓ Compliant

✓ Crash Tested

✓ Retroreflective

✓ Mains Illuminated

✓ Non-Illuminated

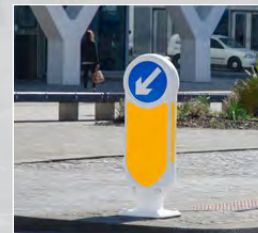
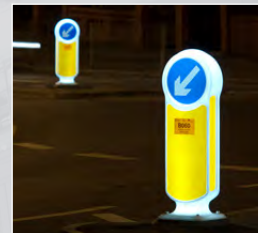
✓ Solar Illuminated

✓ Low Energy LED Solutions

✓ Adaptor Plates

✓ Zero Direct Energy Costs

✓ Single & Double Aspect



NEW

Signmaster™ Ultra Rebound Bollard

A retroreflective self-righting bollard that offers the latest in high grade reflectivity for non-illuminated schemes. The unique body-to-base fixing design (patent pending) connects a rigid Durapol® material bollard to a flexible Impactapol® material base. This unique design optimises the rebound performance, eliminates the need for internal mechanical parts and provides a bollard with optimum retroreflective and rebound performance with minimal maintenance.



Design Features

- Compliant to BS 8442:2015.
- Drive-through performance proven to Performance Standard NE4/100 in testing by MIRA.
- 300mm sign face helps increase safety.
- All regulatory and warning signs are available.
- Reliable rebound bollard, the Impactapol material one piece base, returns the bollard to an upright position after impact.
- Sturdy Durapol material bollard body gives high level protection to the retroreflective panels and sign face.
- Side reflectors angled for increased visibility at junctions.
- Fluorescent yellow retroreflective panels provide high visibility by day and by night.
- Universal compatibility – Signmaster Ultra has an identical footprint to the Rebound Signmaster bollard, to allow ease of upgrade. Adapter plates are available to fit most redundant light boxes.



Signmaster Ultra Rebound Bollard





Signmaster Ultra Rebound Bollard fitted to a redundant lightbox.

SPECIFICATIONS

Colours: Black, White
 Overall height: 1113mm
 Maximum bollard width: 394mm
 Maximum bollard depth: 183mm
 Bolt down base detail: 320 x 320mm
 Fixing centres: 228 x 228mm
 Sign face: 300mm diameter
 Front and side reflective patches meet the minimum standard required.
 Optional rear reflective patches also available.
 Weight of bollard: 5.8kg

Rebound Signmaster™ Bollard

With 360-degree reflectivity for all-round visibility, day and night. Rebound Signmaster non-illuminated bollard is available with a number of fixing options to suit any installation site.



Design Features

- Compliant to BS 8442:2015.
- Drive-through performance proven to Performance Standard NE4/100 in testing by TRL.
- Large 300mm signface helps increase safety.
- All regulatory and warning signs are available.
- One piece bollard with integral fixing points prevents twisting.
- Optional side reflectors give 360 degree reflectivity thereby giving excellent all round visibility.
- Retroreflective materials are highly visible by day and by night.
- Recessed reflector panels are tamper, vandal and weather resistant.
- Extensive range of fixing options available.

SPECIFICATIONS

Colours: Black, White
 Overall height: 1046mm.
 Maximum bollard width: 398mm.
 Maximum bollard depth: 200mm.
 Bolt-down foot detail: 328 x 328mm.
 Fixing centres: 228 x 228mm.
 Sign face: 300mm diameter.
 Front and side reflective patches meet the standard required.
 Optional rear reflective patches also available.
 Weight of bollard: 6kg.



Socketed Rebound Signmaster™ Bollard

With a small footprint, ideal for traffic islands, Socketed Signmaster can be removed and reinstated in seconds.



Design Features

- Compliant to BS 8442:2015.
- Fully tested and certified to Performance Standard NE4/100 by MIRA.
- Large 300mm signface helps increase safety.
- All regulatory and warning signs are available.
- Optional side reflectors give 360 degree reflectivity thereby giving excellent all round visibility.
- Moulded, round stem offers excellent drive-through performance from all angles.
- Durapol® material socket is proven to be corrosion and impact resistant.
- Keyed quick release mechanism allows the bollard to be removed and reinstated in seconds.
- A sturdy anchor peg holds the bollard firmly in place and prevents twisting.
- Small footprint is ideal for traffic islands.
- Durapol material socket plug secures the bollard and prevents debris entering the socket.
- Socket has a flat base for ease of installation.

SPECIFICATIONS

Colours: Black, White
 Overall height: 1074mm.
 Maximum bollard width: 398mm.
 Maximum bollard depth: 152mm.
 Socket width: 209mm.
 Socket length: 237mm.
 Socket depth: 306mm.

Sign face: 300mm diameter.
 Front and side reflective patches meet the standard required.
 Optional rear reflective patches also available.
 Weight of bollard: 6.9kg.

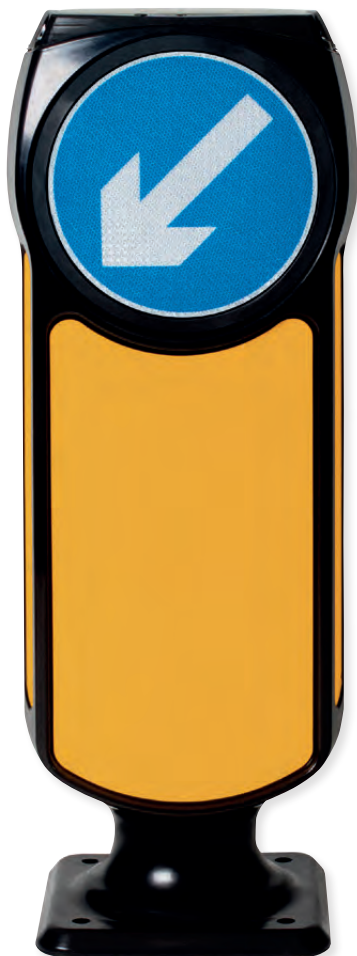


Socketed Rebound Signmaster Bollard

Solar Signmaster™ LED Bollard

With zero direct energy costs, Solar Signmaster is an illuminated self-righting bollard that is ideal for areas with no mains electricity, or for schemes that are reducing the costs associated with illuminated road signs.





Design Features

- Compliant to BS 8442:2015.
- Zero Direct Energy Costs: Solar panel charges large capacity batteries. Enters 'Eco-Mode' to preserve battery when light level is too low to generate continuous charge.
- Large 300mm LED illuminated sign face helps increase safety.
- All regulatory and warning signs are available.
- Passively Safe: One piece bollard with integral fixing points prevents twisting.
- Smart Power: 2 x 20Ah batteries provide 40Ah capacity.
- LED run time (approx. 4150 hours per annum).
- IP Rated Protection: Sealed, domed below ground battery chamber provides IP67 rated protection for batteries and circuit.
- IP Rated Protection: Bollard IP56 rated.
- Solar panel cover protects the LDR and solar panel.
- Future proof - plug in power connector allows for quick and easy bollard only replacement.

SPECIFICATIONS

Colours: Black, White
 Overall height: 1044mm.
 Maximum bollard width: 397mm.
 Maximum bollard depth: 187mm.
 Foot detail: 351 x 351mm.
 Fixing centres: 228 x 228mm.

Sign face: 300mm diameter.
 Front and side reflective patches meet the standard required.
 Optional rear reflective patches also available.
 Weight of bollard: 7.4kg.

Rebound Signmaster™ LED Bollard

An illuminated keep left bollard available with a choice of LED lighting options to suit your installation.

Design Features

- Compliant to BS 8442:2015.
- Drive-through performance proven to Performance Standard NE4/100 in testing by TRL.
- Large 300mm signface helps increase safety.
- All regulatory and warning signs are available.
- Optional side reflectors give 360 degree reflectivity thereby giving excellent all round visibility.
- The LED's have a minimum life span of 50,000 hours, equating to approximately 10 years when operated with the built-in Photocell or with a CMS device (enquire for details of compatibility).
- Made from double-skinned, passively safe Impactapol® Material.
- An infra-red phototransistor ensures the unit is only illuminated during the hours of darkness.

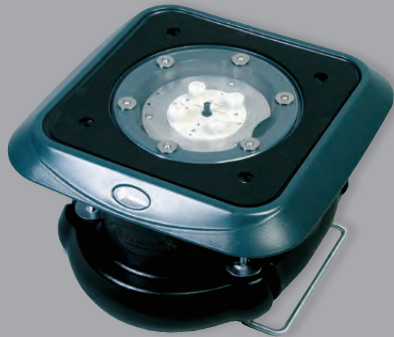
SEE PAGE 8 FOR BOLLARD SPECIFICATIONS





Signmaster Sublite™ LED Lighting Unit & Underground Box

Featuring low power consumption and an infrared phototransistor that ensures the unit is only lit during the hours of darkness. Ideal for new installations, that require a low energy but mains-driven illuminated bollard.



Signmaster™ LED 24V Flush Installation Kit

Can be quickly installed, perfect for when a new quick illuminated bollard needs installing.



Sublite Pod™ IP68 LED Gear Tray & Conversion Kits

With fittings designed to fit most leading industry standard light boxes, this option allows any redundant light box to be converted to a Rebound Signmaster Bollard.





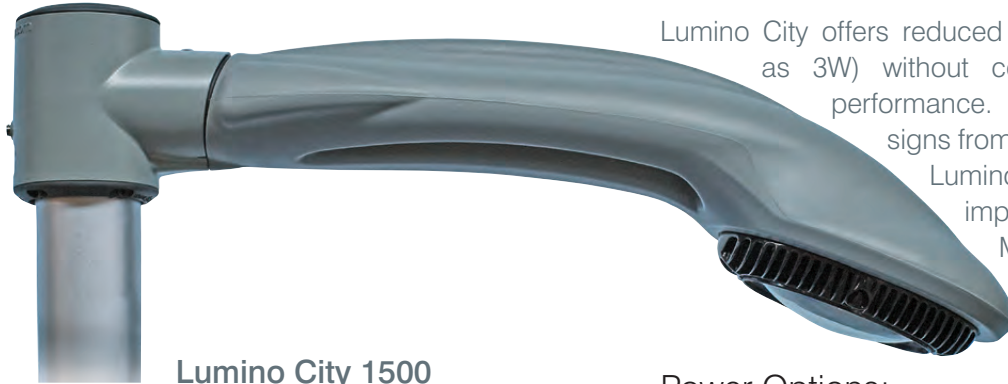
Sublite Lumino™

Lighting the Diagram 606 signface on a Roundabout chevron installation is a legal requirement. Sublite Lumino LED Uplighter is designed to provide excellent levels of illumination while retaining the passive safety features of our Chevreflex Ultra™ Sign System.





Lumino City™ LED Downlighter Range



Lumino City 1500



Lumino City 750

Lumino City offers reduced power consumption (as low as 3W) without compromising on luminance performance. Available in two sizes for signs from 600mm to 1500mm diameter, Lumino City is manufactured from our impact absorbing Impactapol® Material to withstand vehicle impacts and improve longevity.

Power Options:

230V MAINS POWERED



Lumino City 750



Lumino City 1500

Best For:

Increased reliability, simple installation and long lifespan.

24V (LUMINO CITY 750) WITH DRIVER & TRANSFORMER



Lumino City 750



Optional 230V ac to 24V ac Transformer available - or use your own

Best For:

Improved safety in case of a drive-through collision and low power consumption.



Ecolumino™ LED Downlighter Gear Tray

Ecolumino LED Downlighter Gear Tray available in 750mm and 1500mm sizes for retrofitting for the conversion of existing sign lights.



STANDARD DOWNLIGHTER GEAR TRAY



ECOLUMINO DOWNLIGHTER GEAR TRAY

ECOLUMINO 750



ECOLUMINO 1500



PASSIVELY SAFE

Passively safe street furniture is designed to minimise the severity of injury to occupants of a vehicle that collides with it. The European Standard BS EN 12767 defines a universal test that establishes the performance of a passively safe roadside structure.

Glasdon passively safe highways products are tested by accredited independent specialists at MIRA and TRL.



Visit our website to see our full range of Passively Safe products. Downloadable product literature, case studies and video clips are also available.

Model specifications are available on all products in PDF, .DWG (Auto Cad), or .DXF formats.

01253 600411

@ hs@glasdon-uk.co.uk

www.glasdon.com



Glasdon, Chevrolflex Ultra, Durapol, Ecolumino, Impactapol, Lumino City, Signmaster, Signmaster Sublite, Solar Signmaster, Sublite Lumino and Sublite Pod are trademarks or registered trademarks of GLASDON Group or its subsidiaries in the UK and other countries.

Glasdon Group Limited Is An Equal Opportunities Employer.

© Glasdon 11/2019. Glasdon reserve the right to alter price and specification without prior notice.



GV544/02
LH/