

Highways Lighting Solutions

www.glasdon.com

Non Illuminated Bollards	3-11
Rebound Signmaster™ Ultra Bollard.....	4-5
Rebound Signmaster™ Bollard.....	6-9
Socketed Rebound Signmaster™ Bollard.....	10-11
(Rebound Signmaster Sign Options.....	23)
Illuminated Bollards	15-22
Solar Signmaster™ LED Bollard.....	16-17
Signmaster Sublite™ LED Lighting Unit & Underground Box.....	18-19
Signmaster™ LED 24V Flush Installation Kit.....	20-21
Sublite Pod™ IP68 LED Gear Tray & Conversion Kits.....	22
(Rebound Signmaster Sign Options.....	23)
Sign Lights	26-35
Lumino City™ LED Downlighter Range.....	28-31
Ecolumino™ LED Downlighter Gear Tray	32
Sublite Lumino™ LED Uplighter	34-35
High Performance Materials	38-39
Photo Gallery	12-14, 24-25, 27, 33, 36-37

Street Lighting

Glasdon UK designs, manufactures and supplies a range of illuminated and non-illuminated bollards and street lighting products that can help local authority lighting departments achieve significant cost savings on electricity and maintenance.

Quick Reference Key



Non-Illuminated Bollards



At Glasdon we have been designing and manufacturing bollards for more than 40 years. Our versatile road safety solutions are used all over the highways and byways of the United Kingdom, and we like to think we have a product for every application.

Our non-illuminated Rebound Signmaster bollard range includes a variety of models and fixing options that are ideal when no illumination is required. The retroreflective panels and signface give excellent visibility and increase safety.



NEW Rebound Signmaster™ Ultra Bollard

DESIGN FEATURES

- Compliant to BS 8442:2015.
- Drive-through performance proven to Performance Standard NE4/100 in testing by MIRA.
- 300mm sign face helps increase safety.
- All regulatory and warning signs are available.
- Reliable rebound bollard, the Impactapol® material one piece base, returns the bollard to an upright position after impact.
- Sturdy Durapol® material bollard body gives high level protection to the retroreflective panels and sign face.
- Side reflectors angled for increased visibility at junctions.
- Fluorescent yellow retroreflective panels provide high visibility by day and by night.
- Universal compatibility – Signmaster Ultra has an identical footprint to the Rebound Signmaster™ bollard, to allow ease of upgrade. Adapter plates are available to fit most redundant light boxes.



MATERIAL & COLOUR OPTIONS



Black



White

Bollard: Durapol® Material.

Base: Impactapol® Material

Fixings: Stainless Steel.

Retroreflective Sign/Patches: All retroreflective materials meet the requirements in table NA1 of BS EN 12899-1:2007 Fixed Vertical Road Signs.

SPECIFICATIONS

Overall height: 1113mm

Maximum bollard width: 394mm

Maximum bollard depth: 183mm

Bolt down base detail: 322 x 322mm

Fixing centres: 228 x 228mm

Sign face: 300mm diameter

Front and side reflective patches meet the minimum standard required.

Optional rear reflective patches also available.

Overall weight: 5.8kg



Rebound Signmaster Ultra Bollard



Rebound Signmaster™ Bollard

DESIGN FEATURES

- Compliant to BS 8442:2015.
- Drive-through performance proven to Performance Standard NE4/100 in testing by TRL.
- Large 300mm signface helps increase safety.
- All regulatory and warning signs are available.
- One piece bollard with integral fixing points prevents twisting.
- Optional side reflectors give 360 degree reflectivity thereby giving excellent all round visibility.
- Retroreflective materials are highly visible by day and by night.
- Recessed reflector panels are tamper, vandal and weather resistant.
- Extensive range of fixing options available.



MATERIAL & COLOUR OPTIONS



Black



White

Bollard: Impactapol® Material.

Fixings: Stainless Steel.

Retroreflective Sign/Patches: All retroreflective materials meet the requirements in table NA1 of BS EN 12899-1:2007 Fixed Vertical Road Signs.

SPECIFICATIONS

Overall height: 1046mm.

Maximum bollard width: 398mm.

Maximum bollard depth: 200mm.

Bolt-down foot detail: 332 x 332mm.

Fixing centres: 228 x 228mm.

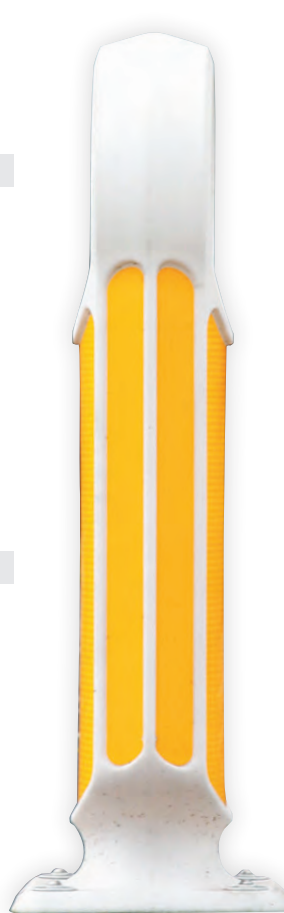
Sign face: 300mm diameter.

Front/rear patch true visibility area: 165,183mm².

Side patch area: 26,820mm² per patch.

Total side patch area: 53,640mm².

Weight of bollard: 6kg.



Rebound Signmaster Bollard

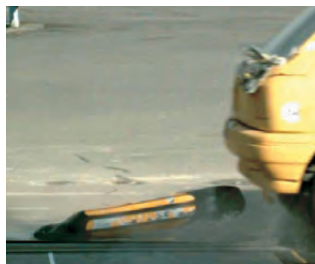
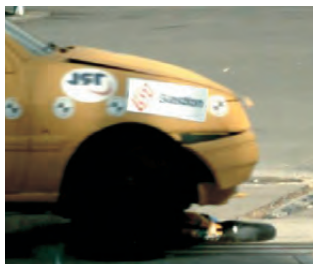
Passively Safe - To help save a life

Rebound Signmaster™ Bollard, Signmaster Sublite™ and 24V Flush Installation Kit have been tested and passed to Performance Standard NE4/100Km/h under BS EN 12767:2007. (Passive safety of support structures for road equipment).

Manufactured in passively safe Impactapol® material to help prevent or reduce the severity of personal injury in the event of vehicle impact. If impacted or run through, Rebound Signmaster will return to an upright position ensuring the hazard remains clearly marked, thereby saving on replacement and reinstatement cost.



Outperforms traditional illuminated bollards.



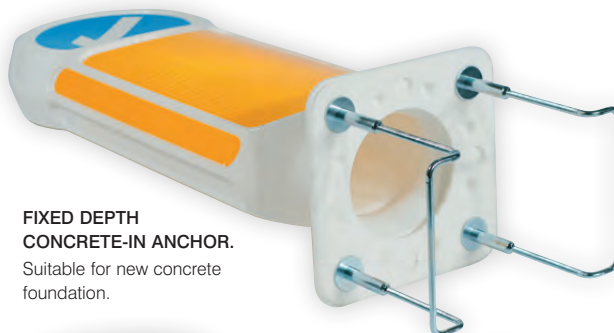
REBOUND SIGNMASTER SURFACE MOUNTING FIXING OPTIONS

All fixing options allow for quick and easy bollard removal and reinstatement.



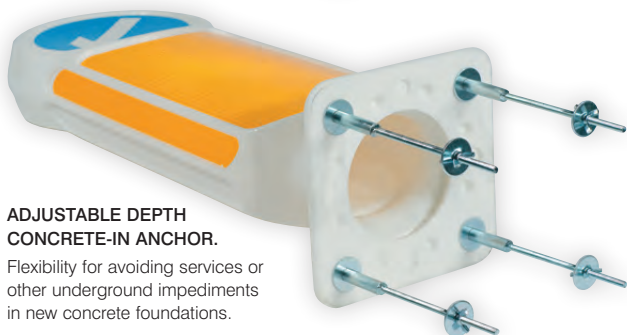
BOLT-DOWN FIXING.

Fix directly into an existing or new concrete foundation.



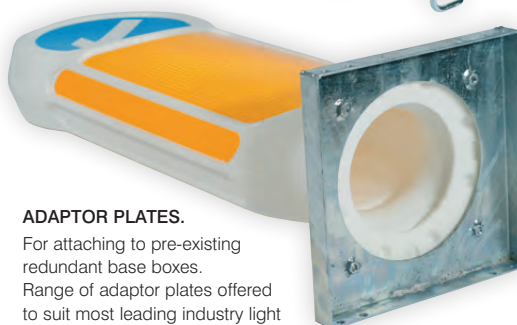
FIXED DEPTH CONCRETE-IN ANCHOR.

Suitable for new concrete foundation.



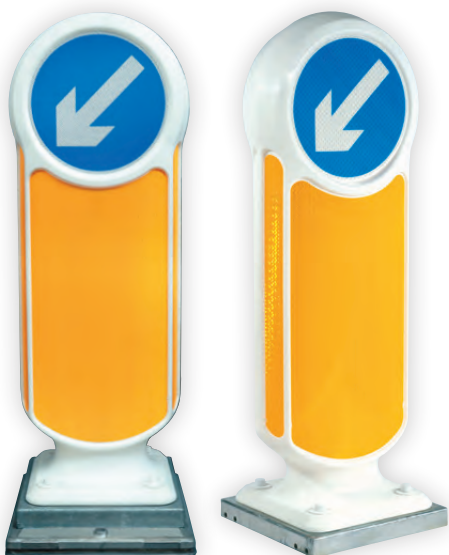
ADJUSTABLE DEPTH CONCRETE-IN ANCHOR.

Flexibility for avoiding services or other underground impediments in new concrete foundations.



ADAPTOR PLATES.

For attaching to pre-existing redundant base boxes. Range of adaptor plates offered to suit most leading industry light boxes.



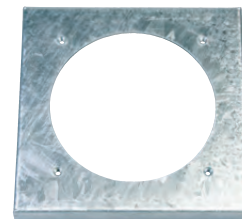
GALVANISED ADAPTOR PLATES

Six different adaptor plates all in Galvanised finish for corrosion resistance and to match the finish of light boxes.

ADAPTOR PLATES AVAILABLE FOR FITTING TO:

Forest City
Haldo (Domed lens)
Haldo (Flat lens)
Haldo Halo
John Wilkinson
Morrison
Pearce Gowshall
Pudsey Diamond Traffic
Signature Blbase 12
Signature Blbase 51
Signature Budget

Signature Citybase
Signature Elite MKIII
Signature Premium
Signature Quick Access
Signature Quick Release
Signature Safebase
Signature Superbase
Signature Superior
Signature Surebase
Simmons Signs Global
Simmons Signs Global Plus
Truesigns





Socketed Rebound Signmaster™ Bollard

DESIGN FEATURES

- Compliant to BS 8442:2015.
- Fully tested and certified to Performance Standard NE4/100 by MIRA.
- Large 300mm signface helps increase safety.
- All regulatory and warning signs are available.
- Optional side reflectors give 360 degree reflectivity thereby giving excellent all round visibility.
- Moulded, round stem offers excellent drive-through performance from all angles.
- Durapol® material socket is proven to be corrosion and impact resistant.
- Keyed quick release mechanism allows the bollard to be removed and reinstated in seconds.
- A sturdy anchor peg holds the bollard firmly in place and prevents twisting.
- Small footprint is ideal for traffic islands.
- Durapol material socket plug secures the bollard and prevents debris entering the socket.
- Socket has a flat base for ease of installation.





MATERIAL & COLOUR OPTIONS



Black



White

Bollard: Impactapol® Material.

Socket: Durapol® Material.

Retroreflective Sign/Patches: All retroreflective materials meet the requirements in table NA1 of BS EN 12899-1:2007 Fixed Vertical Road Signs.

SPECIFICATIONS

Overall height: 1074mm.

Maximum bollard width: 398mm.

Maximum bollard depth: 152mm.

Socket width: 209mm.

Socket length: 237mm.

Socket depth: 306mm.

Sign face: 300mm diameter.

Front/rear patch true visibility area: 151,475mm².

Side patch area: 20,784mm² per patch.

Total side patch area: 41,568mm².

Weight of bollard: 6.9kg.



ANCHOR PEG

Secures the bollard into the socket. The peg engages with a lock mechanism to prevent the bollard being removed without the specially designed key. The lock remains operational following a drive-through impact for ease of bollard replacement.



CONCRETE SHELF

Allows concrete to flow over the shelf of the socket offering anchorage.

FLAT BASED SOCKET

For ease of installation.



KEYED QUICK RELEASE MECHANISM

Allows replacement bollard to be installed in seconds.

DURAPOL SOCKET PLUG

Allows for easy replacement if a bollard is damaged, secures the bollard into the socket and prevents debris entering the socket.



Rebound Signmaster™ Ultra Bollard fitted to a redundant lightbox.









Illuminated Bollards

For road and traffic bollards where illumination remains a statutory requirement, we offer a number of lighting options.

A range of Glasdon LED illuminated options are available for both new installations and for existing installations / lightboxes. Also included in the range is the smart 'zero energy' Solar Signmaster™ bollard, which offers increased visibility at night without direct mains electricity.



Solar Signmaster™ LED Bollard

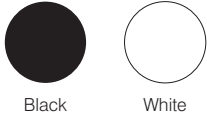
DESIGN FEATURES

- Compliant to BS 8442:2015.
- Zero Direct Energy Costs: The solar panel powers 2 x 20Ah batteries providing a total capacity of 40Ah.
- Eco-Mode smart power: In order to preserve battery and keep the sign face illuminated at night, the eco-mode switches on when the battery life falls below 50% capacity.
- LDR technology: Ensures the sign face is only illuminated during the hours of darkness.
- Large 300mm LED illuminated sign face helps increase safety.
- All regulatory and warning signs are available.
- Passively Safe: One piece bollard with integral fixing points prevents twisting.
- LED run time (approx. 4150 hours per annum).
- IP Rated Protection: Sealed, domed below ground battery chamber provides IP67 rated protection for batteries and circuit.
- IP Rated Protection: Bollard IP56 rated.
- Solar panel cover protects the LDR and solar panel.
- Future proof - plug in power connector allows for quick and easy bollard only replacement.





MATERIAL & COLOUR OPTIONS



Black

White

Bollard Body: Impactapol® Material
 Solar Panel Cover: Thermoplastic Polyurethane (TPU)
 Battery Chamber: Durapol® Material
 Retroreflective Sign/Patches: All retroreflective materials meet the requirements in table NA1 of BS EN 12899-1:2007 Fixed Vertical Road Signs.

SPECIFICATIONS

Overall height: 1044mm.
 Maximum bollard width: 397mm.
 Maximum bollard depth: 187mm.
 Foot detail: 332 x 332mm.
 Fixing centres: 228 x 228mm.
 Sign face: 300mm diameter.
 Front/rear patch true visibility area: 151,475mm².
 Side patch area: 20,784mm² per patch.
 Total side patch area: 41,568mm².
 Weight of bollard: 7.4kg.



The large 300mm LED sign face is operated by LDR for night-time illumination. Powered by a smart 'Eco Mode' LED circuit when battery voltage is below 6V (50%) to maximise the run-time of the LED.



During daylight hours, the solar panel charges the large capacity batteries which are housed in the sealed (IP67 rated) below ground chamber.

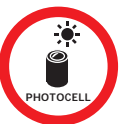


Signmaster Sublite™ LED Lighting Unit & Underground Box

DESIGN FEATURES

- Low Power Consumption - From as low as 5W.
- Available in 230V ac or 24V ac - Low voltage option.
- Remains Illuminated following a Vehicle Collision - Concrete anchoring system secures the base box into the ground. Proven at 100Km/h (62mph).
- Water Ingress Protected (IP67) - Reduce maintenance resource and associated costs caused by water ingress.
- Built-in Phototransistor and CMS Equipment Compatibility - Minimises power consumption and maximises LED lifetime.





SPECIFICATIONS

	230V AC	24V AC
Power Use (ON)	5.0W	6.5W
Power Use (STANDBY)	0.33W	1.5W
UMSUG Code (ON)	40 0005 0012 100	40 0005 0000 100
UMSUG Code (STANDBY)	96 0001 0003 100	96 0002 0000 100
Power Factor	0.91	0.48

(24V ac Transformer is IP68 rated and will run up to 3 Bollards)



50/100MM DUCTING CONNECTOR

Prevent exposed wires by connecting ducting to the chamber.



COMPATIBLE WITH CMS TELEMETRY EQUIPMENT

Equipment stored safely within the IP67 chamber, attached to the underside of the sealed lid.



White Mini Ensign™ Illuminated rebound bollard is available with Sublite LED Lighting unit and underground box. Ideal for cycle lane delineation.

OPTIONAL EXTRAS



DUCTING CHAMBER

Allows 230V cable to be laid at the legal requirement depth. Multiple boxes can be stacked to add more depth if required.



INSTALLATION LID

Prevents concrete getting inside the unit during installation.



PHOTOTRANSISTOR COVER CAP

For 24 hour illumination (regardless of external light levels).



230V AC TO 24V AC TRANSFORMER

Transformer for 24V model available.



DUCTING SPLITTER

Allows 2 ducts to be connected to the unit.



Signmaster™ LED 24V Flush Installation Kit

DESIGN FEATURES

- Low Power Consumption - 6.5W.
- Quick and Easy Installation - Slot-cut a low-voltage cable supply without costly carriageway closures.
- Flush Installation - Added safety as no hazard is created if the bollard is removed.
- Remains Illuminated Following a Vehicle Collision - Proven at 100km/h (62mph).



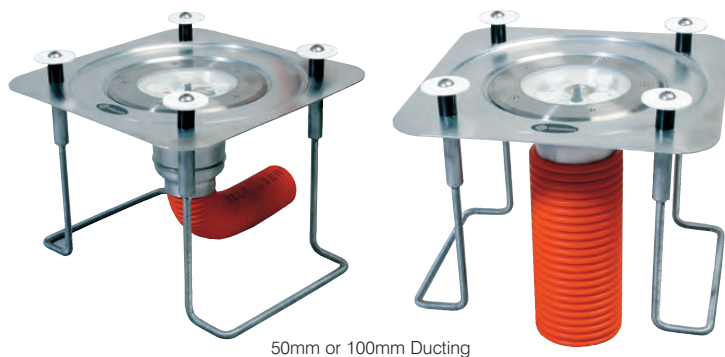


SPECIFICATIONS

	24V AC
Power Use (ON)	6.5W
Power Use (STANDBY)	1.5W
UMSUG Code (ON)	40 0005 0000 100
UMSUG Code (STANDBY)	96 0002 0000 100
Power Factor	0.48



(24V ac Transformer is IP68 rated and will run up to 3 Bollards)



50mm or 100mm Ducting

DUCTING COMPATIBILITY

Aluminium funnel fits both 50mm and 100mm Ducting.

OPTIONAL EXTRAS



PHOTOTRANSISTOR COVER CAP

For 24 hour illumination (regardless of external light levels).



230V AC TO 24V AC TRANSFORMER

Transformer for 24V model available.



INSTALLATION LID

Protects the unit and fixing points during installation.



Rebound Signmaster LED 24V Flush Installation Kit with optional 100mm Bend.

Signmaster LED 24V Flush Installation Kit

Sublite Pod™ IP68 LED Gear Tray & Conversion Kits



DESIGN FEATURES

- Low power consumption of just 5.0W when the LEDs are on.
- The LEDs have a minimum life span of 50,000 hours. Equating to approximately 10 years when operated with the built-in Photocell or with a CMS device (enquire for details of compatibility).
- UMSUG Charge code allows accurate inventory submission of unmetered electrical usage.
- IP68 Ingress Protection Rating.
- Polycarbonate Housing provides a protective, sealed capsule for the LED circuit.
- IP68 Cable Gland at cable entry point.



SPECIFICATIONS

	230V AC	24V AC
Power Use (ON)	5.0W	6.5W
Power Use (STANDBY)	0.33W	1.5W
UMSUG Code (ON)	40 0005 0012 100	40 0005 0000 100
UMSUG Code (STANDBY)	96 0001 0003 100	96 0002 0000 100
Power Factor	0.91	0.48

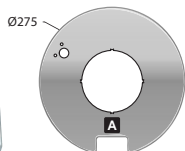
(24V ac Transformer is IP68 rated and will run up to 3 Bollards)

FOUR STANDARD GEAR TRAY CONVERSION KITS AVAILABLE

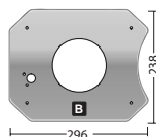
Most leading industry light boxes can be converted to a Rebound Signmaster™ LED bollard. Check with our Sales Office for compatibility if your adaptor plate model is not listed here.



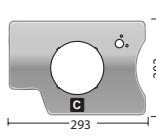
Adaptor plate



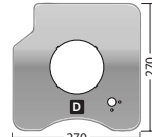
A Simmonsigs Global
Simmonsigs Global Plus
Pudsey Diamond Traffic



B Signature Budget
Signature Superior
Signature Premium
Signature Quick Release
Signature Superbase
Signature Safebase
John Wilkinson
Haldo Halo
Haldo (Domed lens)



C Signature Blbase 12
Signature Blbase 51
Signature Citybase
Signature Surebase
Signature Quick Access
Truesigns
Morrison
Forest City



D Signature Elite MKIII
Haldo (Flat lens)
Pearce Gowshall



OPTIONAL EXTRAS



PHOTOTRANSISTOR COVER CAP

For 24 hour illumination (regardless of external light levels).



230V AC TO 24V AC TRANSFORMER

Transformer for 24V model available.



IP68 RATED PLUG

Offers an IP68 rated plug connection to the cut out.

Signmaster™ Range Signface Options

RETROREFLECTIVE PATCH OPTIONS



OPTION 1 REFLECTORS

- 1 x Fluorescent Yellow retroreflective front panel.
- 2 x Fluorescent Yellow retroreflective side panels.
- 1 x 300mm Signface.



OPTION 2 REFLECTORS

- 1 x Fluorescent Yellow retroreflective front panel.
- 4 x Fluorescent Yellow retroreflective side panels.
- 1 x 300mm Signface.



OPTION 3 REFLECTORS

- 1 x Fluorescent Yellow retroreflective front panel.
- 1 x Fluorescent Yellow retroreflective back panel.
- 4 x Fluorescent Yellow retroreflective side panels.
- 1 x 300mm Signface.



OPTION 4 REFLECTORS

- 1 x Fluorescent Yellow retroreflective front panel.
- 1 x Fluorescent Yellow retroreflective back panel.
- 4 x Fluorescent Yellow retroreflective side panels.
- 2 x 300mm Signfaces.

SIGN OPTIONS

Rebound Signmaster has the option to carry one or two signs.

Rebound Signmaster LED Legal Sign Options (for use on highways).



610 R



610 L



606 R



606 L



606



611



951



955



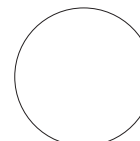
956



957



616



Blank White

Rebound Signmaster Legal Sign Options (for use on highways).



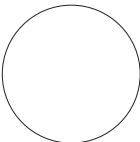
610 R



610 L



611



Blank White

Other sign options are available on request.
Please contact our sales office for details.



Rebound Signmaster Sign Options







Sign Lights

While illumination requirements for road signs are constantly decreasing, there are still a large number of cases where external lighting is required. Glasdon UK street lighting products are designed to help you remove expensive lighting wherever you can, or slash your energy and maintenance costs where you can't.





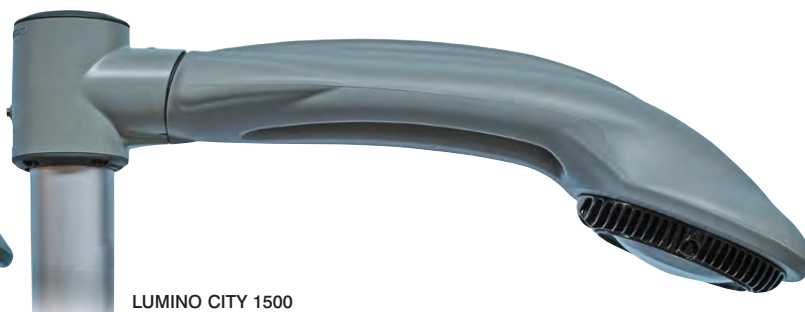
Lumino City™ LED Downlighter Range

DESIGN FEATURES

- 3.0 to 8W power consumption (dependent upon model).
- Impact-absorbing Impactapol Material is flexible, weather resistant, durable and robust.
- Built-in 'flex-point' will allow the sign light to withstand vehicle side swipe collisions, reducing maintenance and replacement costs.
- Range of High Grade Aluminium and Steel Brackets including single and double mid-mount clamp brackets - manufactured from durable and robust Armortec® coated aluminium and steel. Available in sizes to suit 76 to 168mm posts.
- Energy Efficient Mains Powered LED – reduces energy costs, maintenance and carbon footprint.
- 230V power option is a mains driven unit providing excellent reliability.
- High Performance Optics – optimal light spread and uniformity using the fewest LEDs possible for better reliability and lower power usage.
- Aluminium Heatsink – regulates the heat output from the LEDs to maximise the life span of the LEDs.
- IP66 rated for a long product life with reduced maintenance.
- An optional photocell ensures the unit is only illuminated during the hours of darkness, further increasing efficiency.
- A moulded-in cradle makes Lumino City suitable for use with multiple makes of remote monitoring equipment.
- The LEDs have a minimum life span of 50,000 hours. Equating to approximately 10 years when operated with the built-in Photocell or with a CMS device (enquire for details of compatibility).
- Choice of double or single sided fixing brackets for pole top, mid post or wall fixing. Various offset and specialist brackets available. Please enquire for details.



LUMINO CITY 750



LUMINO CITY 1500



Black

Aircraft Grey

MATERIAL & COLOUR OPTIONS

Signlight Arm: Impactapol® Material.
 Brackets and Heatsink: Armortec® coated aluminium and steel.
 Cap and Conversion Collar: Impactapol Material.
 Fixings: Stainless Steel.

SPECIFICATIONS

	Lumino City 750	Lumino City 1500
Depth:	420mm	720mm
Height:	240mm	240mm
Width:	190mm	210mm
Weights:		
Single unit with bracket:	2.5kg	3.3kg
Double unit with bracket:	4.6kg	6.2kg
Single unit with universal bracket:	2.1kg	2.9kg

	LUMINO CITY 750				LUMINO CITY 1500		
	230V AC		24V AC (WITH TRANSFORMER)		230V AC		
Compatible Sign Sizes (mm)	600	750	600	750	900	1200	1500
Mean Illuminance	E2		E2		E2		
Uniformity of Luminance	UE3	UE2	UE3	UE2	UE3	UE3	UE2
Power Use (ON)	3.6W		3.0W		8.0W		
UMSUG Code (ON)	40 0003 0008 100		40 0002 0002 100		40 0008 0021 100		
Power Factor	0.91		0.82		0.92		

CAN ABSORB VEHICLE SIDESWIPE



Impactapol material housing will flex if impacted by a vehicle and return to its normal position afterwards.

*Marks requirements within Section 7.4
 Externally Illuminated Signs of BSEN 12899-1:2007

POWER OPTIONS

230V
Mains
Powered



Lumino City™ 750
Downlighter



Lumino City™ 1500
Downlighter

Best For:

INCREASED RELIABILITY, SIMPLE
INSTALLATION AND LONG LIFESPAN.

24V
(Lumino City 750)
Downlighter
with Driver &
Transformer



Lumino City™ 750
Downlighter

Best For:

IMPROVED SAFETY IN CASE OF A DRIVE-THROUGH
COLLISION AND LOW POWER CONSUMPTION.



Optional 230V ac
to 24V ac Transformer
available - or use your own

FIXING OPTIONS

1. SINGLE TOP AND MID POST FIXING KIT



Single Sided Closed Top
- 76mm or 89mm posts.

OR



Single Sided Open Top
- 76mm or 89mm posts.
- Without cap for mounting the
light part way down the post.

2. DOUBLE TOP AND MID POST FIXING KIT



Double Sided Closed Top
For mounting two sign lights back-to-back.
- 76mm or 89mm posts.
- Complete with cap for mounting the light
onto the top of the post.

OR



Double Sided Open Top
For mounting two sign lights back-to-back.
- 76mm or 89mm posts.
- Without cap for mounting the light part
way down the post.

3. UNIVERSAL BRACKET FOR POST FIXING KIT



Universal Bracket
For larger diameter posts
(114mm, 140mm, 168mm), and
lamp posts.
Fitted with Tamtorque banding.

4. UNIVERSAL BRACKET FOR WALL FIXING KIT



Universal Bracket
For wall mounting.

OPTIONAL EXTRAS



INFRARED PHOTOCELL 0.25W

Ensures the unit is only active during the hours of darkness. UMSUG Code 94 0001 1000 100

PHOTOCELL OPTIONS

Model (lux): 70 55

Please contact our Sales Office for details.



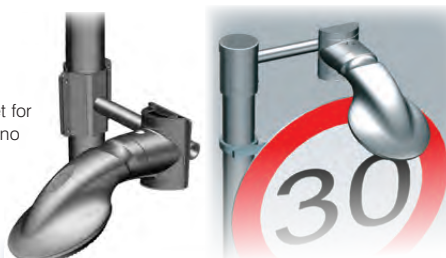
CENTRAL MANAGEMENT SYSTEM (CMS) INTERNAL CRADLE

CMS devices can be installed inside the housing. The telecell is completely enclosed for maximum protection, reducing the risk of vandalism or damage and ensuring interference-free operation of the telecell.

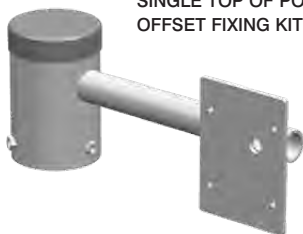
Please contact our Sales Office for details on compatible equipment.

5. OFFSET BRACKET FIXING KIT

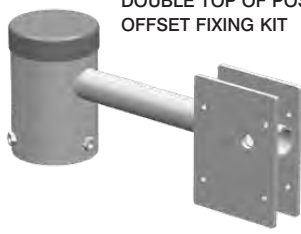
- 76mm posts only.
- Requires a Universal Bracket for post fixing kit to attach Lumino City™ to the Offset Bracket.



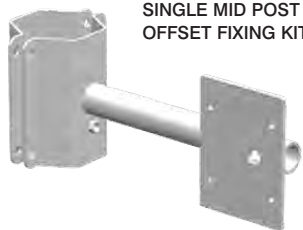
SINGLE TOP OF POST OFFSET FIXING KIT



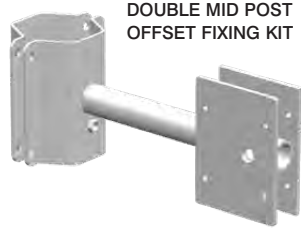
DOUBLE TOP OF POST OFFSET FIXING KIT



SINGLE MID POST OFFSET FIXING KIT

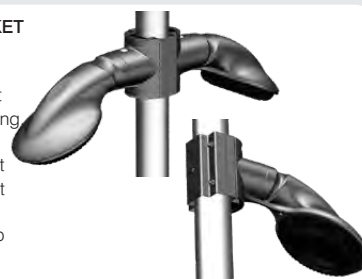


DOUBLE MID POST OFFSET FIXING KIT



6. CLAMP BRACKET

- For fitting without Tamtorque banding
- Requires a Universal Bracket for Post Fixing Kit to attach Lumino City to the Clamp Bracket.



SINGLE MID POST 76MM FIXING KIT



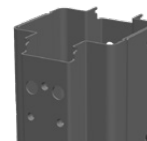
DOUBLE MID POST 76MM FIXING KIT



SINGLE MID POST 114MM FIXING KIT



DOUBLE MID POST 114MM FIXING KIT



Ecolumino™ LED Downlighter Gear Tray

DESIGN FEATURES

- Retrofit LED gear tray for the conversion of existing sign lights.
- Low wattage, energy-efficient LEDs with an in-use power consumption from just 2.8W - 4.2W.
- Fully compliant with BS EN 12899-1 on Luminance levels.
- State-of-the-art optics distribute light evenly over the full face of the sign to fully comply with Class UE3.
- The LEDs have a minimum life span of 50,000 hours. Equating to approximately 10 years when operated with the built-in Photocell or with a CMS device (enquire for details of compatibility).
- Optional Zodian Photocell draws minimal standby power and ensures the unit is only illuminated during the hours of darkness.
- Fits most common sign light designs in the UK.

ECOLUMINO 750

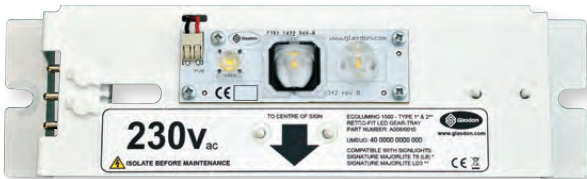


TO ILLUMINATE SIGNS UP TO 750MM

- Type 1 - To fit Signature Exlite LA/Exlite Titan*/Forest City/Pearce Gowshall
- Type 2 - To fit Signature Delta
- Type 3 - To fit Simmonsigns LUA

* Requires an additional conversion fixing kit.

ECOLUMINO 1500



TO ILLUMINATE SIGNS UP TO 1500MM

- Type 1 - To fit Signature Majorlite T8 (L8) Type B
- Type 2 - To fit Signature Majorlite LD3 Type D/Majorlite LB Type B/Forest City
- Type 3 - To fit Simmonsigns LUB MKT
- Type 4 - To fit Simmonsigns LUB

	ECOLUMINO 750		ECOLUMINO 1500		
	230V AC		230V AC		
Compatible Sign Sizes (mm)	600	750	900	1200	1500
Mean Illuminance	E2		E2		E1
Uniformity of Luminance	UE3		UE3		UE2
Power Use (ON)	2.8W		4.2W		
UMSUG Code (ON)	40 0003 0006 100		40 0004 0010 100		
Power Factor	0.41		0.53		

OPTIONAL EXTRAS

INFRARED PHOTOCELL 0.25W

Ensures the unit is only active during the hours of darkness. UMSUG Code 94 0001 1000 100

PHOTOCELL OPTIONS

Model (lux): 70 55

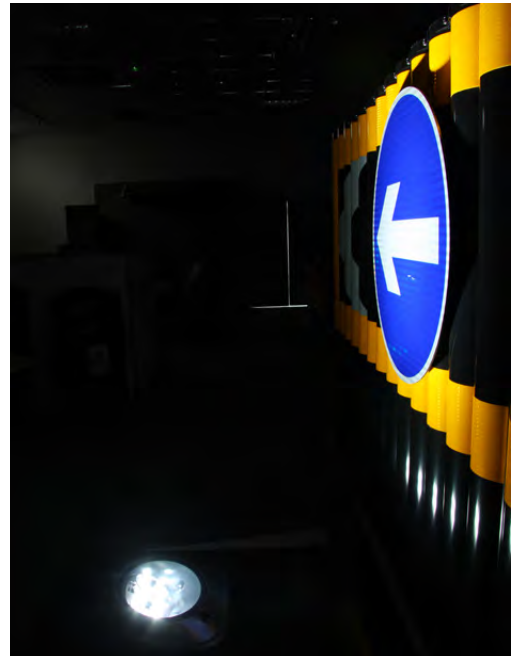
Please contact our Sales Office for details.

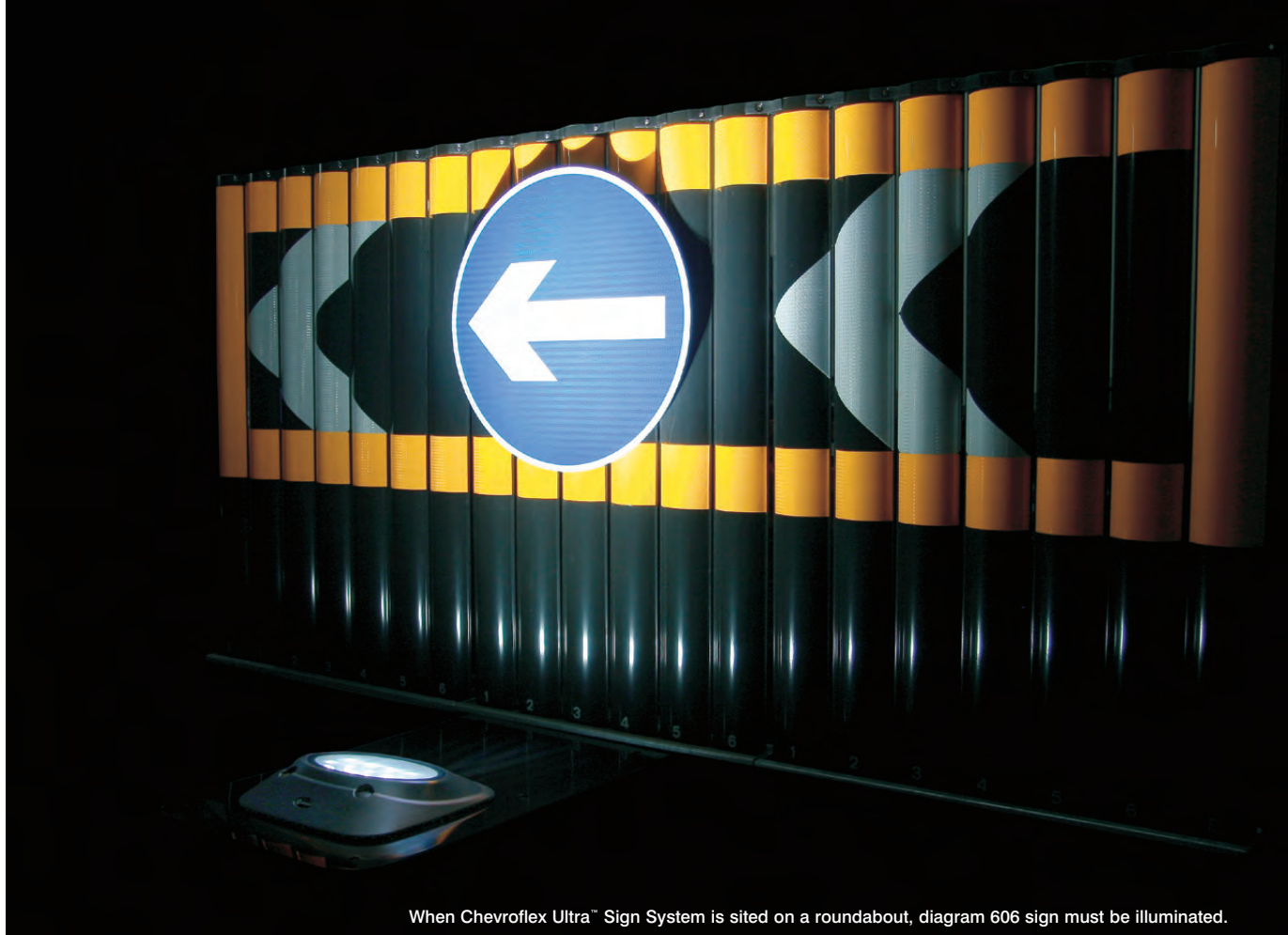


STANDARD DOWNLIGHTER GEAR TRAY



ECOLUMINO DOWNLIGHTER GEAR TRAY





When Chevreflex Ultra™ Sign System is sited on a roundabout, diagram 606 sign must be illuminated.

Sublite Lumino™ LED Uplighter

DESIGN FEATURES

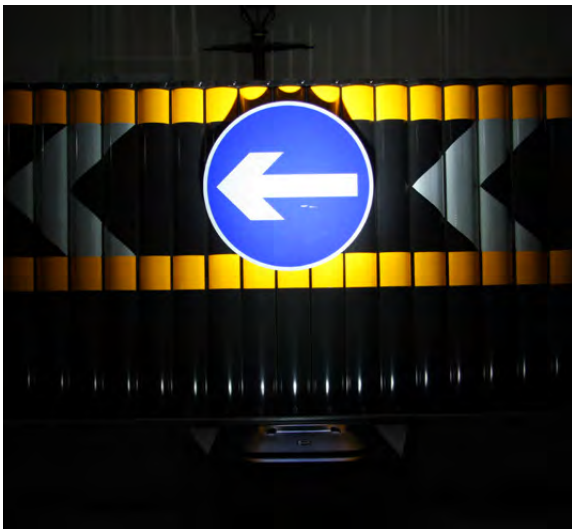
- Flush ground uplighter removes the potential impact hazard created by a traditional post-mounted downlighter.
- Low energy and low maintenance - only 11W power consumption.
- Highly resilient, 100% recycled Durapol® Material underground box is IP67 rated to prevent dust and water ingress.
- The LEDs have a minimum life span of 50,000 hours. Equating to approximately 10 years when operated with the built-in Photocell or with a CMS device (enquire for details of compatibility).
- A phototransistor ensures the unit is only illuminated during the hours of darkness and draws minimal standby power.
- Hinged LED plate allows for adjustment after installation.
- Designed to withstand accidental drive-over.
- Multiple ducting options and optional extension chambers can be added to adapt Sublite Lumino to meet your requirements.



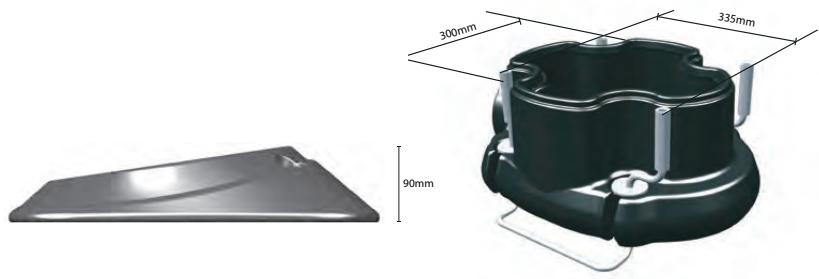


SPECIFICATIONS

	SUBLITE LUMINO		
	230V AC		
Compatible Sign Sizes (mm)	600	900	1200
Mean Illuminance	E3		E2
Uniformity of Luminance	UE3		UE1
Power Use (ON)	11W		
Power Use (STANDBY)	0.66W		
UMSUG Code (ON)	40 0011 0002 100		
UMSUG Code (STANDBY)	96 0001 0004 100		
Power Factor	0.91		



COMPATIBLE WITH CMS TELEMETRY EQUIPMENT
 Equipment stored safely within the IP67 chamber, attached to the underside of the sealed lid.



OPTIONAL EXTRAS



INSTALLATION LID



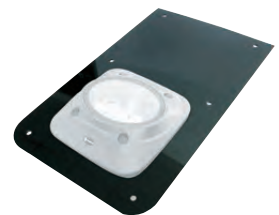
DUCTING SPLITTER



DUCTING CHAMBER



PHOTOTRANSISTOR COVER CAP



OVERGROWTH RESTRICTING SURROUND

Sublite Lumino LED uplighter





High Performance Materials

Glasdon lighting products are manufactured from a range of higher performance materials and undergo stringent checks to ensure durability and best value. Glasdon has ISO 9001:2015 and ISO 14001:2015 accreditation, underlining our commitment to quality.



High Performance Materials

Durapol® Material

A strong, lightweight material that offers a number of advantages over traditional materials. Durapol material is self-coloured, which means it will never need painting and scratches will not show. The material is totally corrosion-free so it will not chip or rust, is UV stable and vandal resistant.

Passively Safe Impactapol® Material

A flexible material with excellent recovery performance, meaning it will return to its original shape following a drive-through collision. Impactapol material products reduce maintenance costs in vulnerable locations by continuing to meet statutory requirements even after repeated impacts. Impactapol material offers all the additional benefits of Durapol material - it is self-coloured and totally corrosion-free.

Armortec® Corrosion Resistant Coating

A specially formulated coating to extend the life of Glasdon metal products and components used externally.



Passively Safe

Passively safe street furniture is designed to minimise the severity of injury to occupants of a vehicle that collides with it. The European Standard BS EN 12767 defines a universal test that establishes the performance of a passively safe roadside structure.

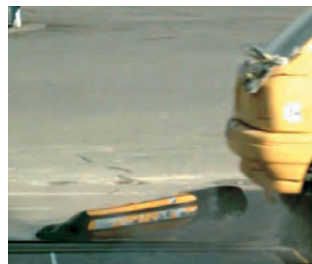
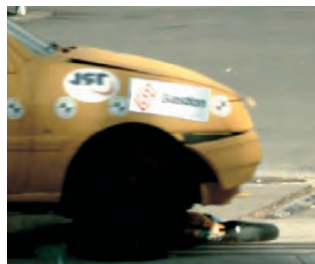
The performance rating is displayed in the following format:

The first number indicates the class impact speed in Km/h: 50, 70 or 100 Km/h. Tests are conducted with a small (900kg) car in a head-on, frontal impact.

The two letters represent the energy absorbed by the structure: High energy absorbing (HE) support structures slow the vehicle considerably on impact; Low energy (LE) structures measurably slow the vehicle but pose a much lower risk of injury to its occupants; Non-energy absorbing (NE) structures have negligible or nil effect on the speed of the vehicle.

The final number represents the occupant safety level and is based on the Acceleration Severity Index (ASI) and Theoretical Head Impact Velocity (THIV) scales, according to European Standard BS EN 1317-1. The available levels are 1-4, where Level 4 represents the safest and Level 1 the most dangerous.

Glasdon passively safe highways products are tested by accredited independent specialists at MIRA and TRL. Where testing has been conducted, the performance rating will be clearly shown on the page.



Solar Signmaster™

Zero Energy, Smart Performance



Indoor Litter Bins / Outdoor Litter Bins



Indoor Recycling Bins / Outdoor Recycling Bins



Free Delivery

*within mainland UK and Northern Ireland



www.glasdon.com



Visit our website to see our full range of Passively Safe products. Downloadable product literature, case studies and video clips are also available. Model specifications are available on all products in PDF, .DWG (Auto Cad), or .DXF formats.

Glasdon®, Armortec, Chevrolflex Ultra, Durapol, Ecolumino, Impactapol, Lumino City, Mini Ensign, Signmaster, Signmaster Sublite, Solar Signmaster, Sublite Lumino and Sublite Pod are trademarks or registered trademarks of GLASDON GROUP or its subsidiaries in the UK and other countries.



Glasdon®

Glasdon U.K. Limited

Local Government Highways Division
Preston New Road
BLACKPOOL
Lancashire
FY4 4UL

Tel: (01253) 600411

Fax: (01253) 792558

E-mail: hs@glasdon-uk.co.uk

Web: www.glasdon.com



Certificate Number 16750
ISO9001, ISO14001, ISO45001

