



HERITAGE

TRADITIONALLY STYLED BUILDINGS



Heritage Traditional Modular GRP Building System

Perfect for security gatehouses, guard posts, visitor information points, ticket sales kiosks and vending modules, the Heritage GRP Modular Building System combines traditional looks with durable, low-maintenance materials.

Design Features

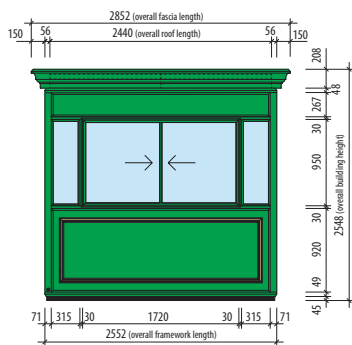
- Elegant roof fascia based on a period aesthetic.
- Attractive internal wall and ceiling lining provides a light and airy working environment.
- Concealed rainwater management system guides run-off to ground-level corner outlets.
- Optional full-width panel glazing improves site security surveillance.
- Tailored to meet your individual layout in sizes from 1.22 x 1.22m to 4.88 x 2.44m.
- Wide choice of optional features for lighting, heating, glazing and ventilation.
- The building can be relocated at a future date if required.
- Delivered fully assembled and off-loaded by crane.







DIMENSIONS



BUILDING SIZES

NOMINAL INTERNAL SIZES (LENGTH x WIDTH)

1.22m Widths	2.44m Widths
1.22 x 1.22m	2.44 x 2.44m
2.44 x 1.22m	3.66 x 2.44m
	4.88 x 2.44m

Height: 2548mm

Weight: from 425kg depending on size and specification

COLOURS

The external colour choice for the framework, moulded roof fascia & external face of the panel is Maroon RAL 3003, Dark Green RAL 6005, Black RAL 9005 and Dark Blue RAL 5003.

The decorative panel relief is normally highlighted in a Gold effect, but can be identical to the panel colour.

MATERIALS

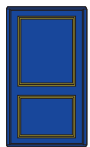
Roof and wall panels: Smooth semi-gloss GRP (Glassfibre reinforced polyester)
Framework: Aluminium

AVAILABILITY

Heritage buildings are normally delivered in approximately 8-10 weeks depending on specification.

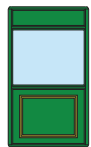
PANELS NOMINALLY 1.22m AND 2.44m WIDE

HS1



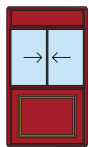
Blank

HS2



Fixed Window

HS3



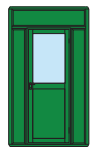
Horizontal Sliding Window

HS4



Top Hung Opening Window

HS5



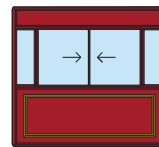
Glazed Door

HD10



Fixed Window

HD11



Horizontal Sliding Window

Case Study

Demonstrating Heritage at Queens University of Belfast (QUB)

The traditional style Heritage Modular GRP Building system enrolls for the start of a new academic year at QUB.

The Heritage GRP building was the ideal choice for maintaining security at this prestigious educational institute with a distinguished history spanning over 175 years.

Education, Research and Society

Founded in 1845, Queen's University of Belfast is a leading public research university in the heart of the capital of Northern Ireland. Looking into the future, the University's 'Strategy 2030' sets out how they will aim to embed the United Nations (UN) Sustainability Development Goals (SDGs) across all their activities over the next ten years to shape a better world through life-changing education and research.

A+ Design

Our friends at the University reached out to replace their ageing security kiosks, and following supportive discussions with our Buildings & Housing department, the decision was made to purchase two 2.44 x 1.22m Heritage Security modules for designated entrances at the campus.

The Heritage Building System features a traditionally styled semi-gloss GRP (glass reinforced polyester) gutter and fascia above powder coated aluminium framework, which contains the GRP faced wall panels with a moulded Heritage relief detail that enhances the traditional effect. The roof fascia, framework and panels are colour matched alongside the aluminium framed windows and door, which provide excellent outward visibility for the security guards within. The units were delivered fully assembled and then carefully offloaded using a vehicle mounted crane into their respective positions below overhanging tree canopies.





Founded in Blackpool in 1959, over the last 65 years we have grown into a successful worldwide brand.

Distributed in **100+**
countries

Turnover **c.£40m**

260+ staff in UK,
France & USA

B2B Dealing with
Government funded sectors
and with private and public
companies worldwide.

Quality by Design

Our mission is to design, manufacture and supply innovative market-leading products that enable our customers to contribute towards a cleaner, safer and more sustainable environment.

The Environment is at our Core

We are passionate about our environment and are committed to continuously improving our environmental performance. Our goal is to drive lasting change to improve all of our futures, not only by improving our own processes but by providing our customers with the products to enable them to improve theirs.





What we can offer

Specifying a Building

Glasdon can help you design the perfect building, and a member of our experienced product specialist team is available to offer no obligation site visits to discuss your requirements, survey the location and make recommendations to ensure the final product is precisely tailored to meet your needs.

Customer Led Projects & Personalisation

We take pride in our ability to work closely with our customers to achieve their desired requests. Our range of modular buildings and housings can be designed bespoke for your individual project or installation requirements, and to meet your exact needs.

Being modular in design, our "off-the-shelf" options are fully customisable in size, configuration, and layout. You can also add additional ancillary items such as electrical packages, signage and non-standard colour coatings, or add a unique touch to your Glasdon order with our Personalisation and Branding Service.

From adding your organisation's logo or crest, right through to full graphic wraparounds or anti-glare glazing, we have the in-house expertise to help you achieve the impact you require. We also offer a free visualisation service.

Installation

Glasdon modular buildings are typically* delivered to site fully assembled, maximising the advantages of off-site construction. This approach significantly reduces on-site activity, helping to minimise disruption to your operations and allowing for a faster, more efficient installation process.

The completed building is offloaded via crane onto your flat and level prepared concrete base, ready for base fixing and sealing by others (or by Glasdon if preferred).

*If your project calls for larger modules, or site access is an issue, contact us and we will be pleased to discuss your requirements in greater detail and tailor a solution to suit.

Glasdon modular buildings offer the facility to be relocated if required.



Other Products



Modus™ Shelter



Nestor™ 400 Grit Bin



Element™ Housing



Space-Liner™ Orderly Barrow (Double Model)



Accord™ Building

@enquiries@glasdon-uk.co.uk

www.glasdon.com



EST. 1959



If you would like to sign up to our e-newsletter, please click the “Sign up for our newsletter” button on our homepage or scan the QR Code.

