

# Simpler Recycling for England

**Is Your Business Ready?**

[www.glasdon.com](http://www.glasdon.com)

# Simpler Recycling

## Is Your Business Ready?

**With a new government initiative regarding waste separation and collection on the horizon for England, businesses may wonder how this gradual shift will affect them. However, as Douglas Adams famously reminded us, 'Don't Panic.' It's not as bad as it sounds. In fact, things are only getting simpler.**

Separating waste can be a complex and time-consuming process, especially when dealing with multiple waste streams. Fortunately, the new initiative will simplify this process.

## 'Simpler Recycling'

### Recycling Made Simpler

In short, 'Simpler Recycling' is a new set of government regulations designed to provide a more consistent and logical approach to recycling practices throughout England.

After introducing new legislation across Wales in April 2024, it is now England's turn to see a change to its recycling practices.



**Starting March 31, 2025, DEFRA's new 'Simpler Recycling' rules will take effect for businesses and non-residential properties across England.**

**This new policy aims to simplify waste separation and collection processes. By mandating a more streamlined set of waste streams, it will create a more consistent and less confusing recycling system for businesses and non-residential properties.**

## Who Will Be Affected?

The new legislation will directly affect businesses, and non-domestic premises such as schools and hospitals.

Businesses and non-domestic premises with more than ten employees will be the first called upon to rejig their recycling practices to align with the newly introduced government rules.

Micro-firms with ten or fewer employees are set to follow on March 31st, 2027, giving them more time to update and adjust their waste management to the upcoming changes.

## Legislation Timeline

Once the government begins introducing the legislation, things will move quickly. To give you more of an overview, we have created a timeline for when collections for specific waste streams will be introduced. This way, you can remain prepared for any upcoming changes that may affect you.





## What Will Be Collected?

The legislation will make the regular collection of six types of waste mandatory.

### Types of waste:

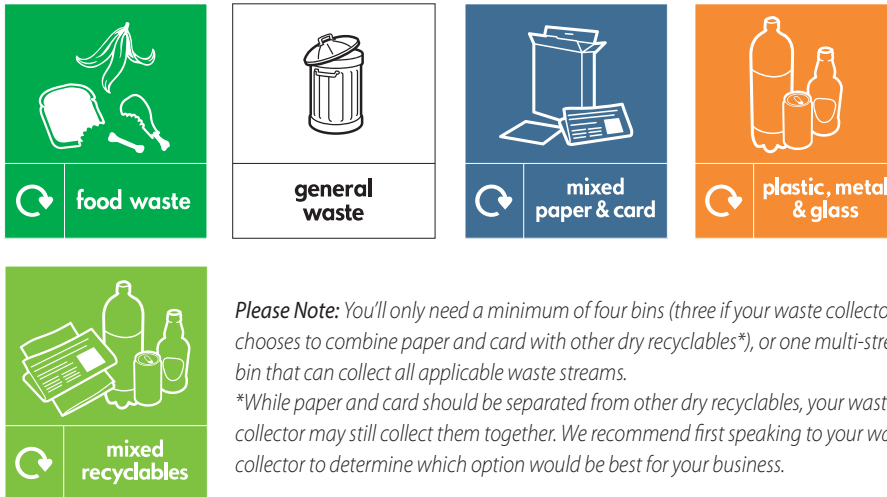
- Paper and Card
- Glass
- Food Waste
- Plastic (including plastic film from 2027)
- Metal
- General Waste

Households will continue to benefit from regular, free waste collections for all applicable waste types, as organised by councils and local authorities. However, businesses will be responsible for their own waste disposal, which may incur costs and require arrangements with private waste collectors.

Household waste collections will occur at stipulated dates and regular intervals, often depending on each local authority. Businesses, on the other hand, will not be bound by specific dates and timeframes allowing them to structure their waste collections more flexibly and to their waste management needs.

# How Will Waste Need To Be Separated?

## Waste will be separated as follows:



Following the announcement of the legislation, many businesses initially feared the need for up to seven bins to cater to each waste stream.

However, glass, metal and plastic can now be combined into one waste stream, defined as 'Dry Mixed Recycling'. Paper and card should be collected separately to this. Waste can be collected in single stream waste units, or in a combined quad bin to separate the four key types of waste and recycling.

If you are already collecting your dry mixed recyclables separately, fear not. There is no mandate to combine glass, metal and plastic into one collection.

As per the Environment Act 2021 and Food Waste Regulations, businesses that produce more than 5 kg of food waste per week must separate food waste from general waste by the March 31st deadline.

# Getting Prepared

**With the deadline fast approaching, it can be hard to know where to begin. Here are some concrete steps your business can take for the upcoming March 31st deadline.**

## REVIEW

A great start is to analyse your current waste management layout and practices and determine any specific spots and areas that will need improvement. Determine what types of waste and how much your business generates, how it is stored, and how it is currently managed.

Waste build-up can be a major hassle. Not only will vital space be taken up for storing waste, but it will also make waste collection more time-consuming and expensive. Determining how regularly waste must be collected can give you a good starting point when organising and negotiating waste collections with responsible providers.

Performing a waste management audit and liaising with your chosen waste collector at this point is critical. They will help you understand if you'll benefit from combined waste units, or separate units to collect higher volumes of one particular type of waste.

**NEED HELP OR DON'T  
KNOW WHERE TO START?**

Contact us today and request a free waste management audit.

## LIAISE

During your review you will have to begin to arrange your waste collection. What collector you choose should depend on your personal business needs and what types of waste you produce. The first step should be researching feasible providers in your locality and determining the best provider with the best fees for regular waste collection.

While most waste collectors in the UK deal with multiple types of waste, many specialise and often tailor their services to suit different waste streams and business needs.

Even though glass, plastic and metal can be collected together, it is still possible to arrange for collections of these types of waste individually depending on your business needs.

## INVEST

Once you have determined your waste management needs, it is time to consider your recycling facilities. Are your bins up to date? Is your signage clear and concise? Are your bins placed smartly?

Updating your bins to better more practical models can make a massive difference.

Clear and appropriate signage can help eliminate confusion about waste stream designations, simplifying waste separation and preventing cross-contamination.

Placing your bins in the right locations will make it easier for employees to dispose of their waste while helping to encourage better waste disposal practices. While there are understandable fears of creating obstructions and blocking pathways with bulkier bins, choosing more compact streamlined bin models can easily prevent that.

## EDUCATE

While having the right bins and waste management structure is vital, long-term success relies on employees understanding and adhering to the newly implemented rules.

Ensure you make employees aware of the changes, what Simpler Recycling means, and how they can help contribute to it. Explain the benefits of correct waste separation and encourage waste segregation. Encouraging recycling as part of your company's overall culture can help you and your employees to go the extra mile and come together as a business.

## PARTNER

As specialists in producing contemporary and versatile waste management solutions, Glasdon offer expert guidance on a variety of topics. We provide [articles](#) and [FAQs](#) to help you establish a successful and thorough waste management scheme and help businesses stay up to date with current developments surrounding waste management.



## How Can We Help Simplify Things?

Upgrading your organisation's waste bins is a crucial step in adapting to Simpler Recycling. You'll need waste solutions that are easy to use, easy to empty, and help facilitate efficient waste separation.





## Nexus® Evolution

The Nexus Evolution is an ideal choice for easy and efficient separation of different waste streams. Its 160l capacity, separated into up to four handy compartments, means the Nexus Evolution will not reach its limit after a short period, making it a great way to dispose of and store various waste streams until being emptied.

Offering even more customisable options, from aperture styles and colours to different sizes, the Nexus Evolution is highly adaptable to all needs and requirements. A liner or divider kit can be added to separate more waste streams and assist with sack removal.

The Nexus Evolution is available in a Duo version with two, a Trio version with three and a Quad version with four compartments.



Nexus® Evolution Duo Recycling Bin

Find out more about the  
**Nexus Evolution**



Nexus® Evolution Quad Recycling Station

## Nexus® Stack 90

The Nexus Stack 90 is another great indoor option for collecting up to four different waste streams. It consists of several compact containers that can be easily stacked to save space in smaller, areas such as offices and other professional settings.

Each stackable unit holds up to 30l of segregated waste and can also be lined up next to each other.

Like all our products for the Nexus range, the Nexus Stack is highly customisable, offering various aperture styles and colours for each bin, making it a highly adaptable and versatile recycling system.

Each unit contains a removable tilt bin allowing them to be easily emptied and cleaned without being dismantled.

Find out more about the Nexus Stack 90, and discover our range of Nexus Stack configurations.



Nexus® Stack Recycling Bin

Find out more about the  
**Nexus Stack**



Nexus® Stack Recycling Bin

## Nexus® Evolution City

The Nexus Evolution City offers the same amazing features as the Nexus Evolution, but designed for outdoor settings. As a sleek contemporary outdoor bin, the Nexus Evolution City is sturdy and long-lasting, making it great for various outdoor settings, including railway stations, parks and even schoolyards. Its narrow footprint makes it a space-saving option, great for narrow pathways and areas where space is limited.

The Nexus Evolution City comes with up to four compact compartments. Its compartments can each be easily delegated to a different waste stream and offer various aperture options to cater to your individual needs and requirements.

The Nexus Evolution City is available in a Duo, Trio and Quad option, with two, three and four compartments respectively.



Nexus® Evolution City Quad Recycling Bin

Find out more about the  
**Nexus Evolution City**



Nexus® Evolution City Duo Recycling Bin

For more products from our simpler recycling range, download our booklet or visit our [website](http://www.glasdon.com).

**Glasdon**  
Quality By Design

Focus on  
Simpler Recycling  
Regulations

[www.glasdon.com](http://www.glasdon.com)

**HOW CAN WE HELP SIMPLIFY THINGS?**  
Upgrading your organisation's waste bins is a crucial step in adapting to Simpler Recycling. You'll need waste solutions that are easy to use, easy to empty, and help facilitate efficient waste separation.

Visit our website to download your free guide on SIMPLER RECYCLING REGULATIONS.

**DOOR RECYCLING BINS**  
Recycling bins with Glasdon's internal recycling programme for your environment. All designs allow you to manage...

**Simpler Recycling Is Your Business Ready?**  
With a new government initiative regarding waste separation and collection on the horizon for England, businesses may wonder how this mandated '5' will affect them. However, as Douglas Adams famously remarked '5' Don't Panic! It's not as bad as it sounds. In fact things are only getting simpler.

Separating waste can be a complex and time-consuming process, especially when dealing with multiple waste streams. Fortunately, the new initiative will simplify this process.

**What Will Be Collected?**  
The legislation will make the regular collection of six types of waste mandatory.

**Types of waste:**

- Glass
- Paper and Cardboard
- Food Waste
- Plastic (including plastic film from 2027)
- Metal
- General Waste

Households will continue to benefit from regular, free waste collection for all applicable waste types, as operated by councils and local authorities. However, businesses will be responsible for the removal of waste from their premises. From 1st April 2025, businesses will be required to separate their waste into six streams on each local authority's doorstep. Local authorities will be responsible for the collection of this waste. The legislation will not be bound by specific dates and requirements, allowing them to tailor their waste collection to their specific needs and management needs.

As per the Environment Act 2021, local food/waste regulations, businesses will produce more than a kg of food waste per week that is separate food waste from general waste by the March 31st deadline.

[www.glasdon.com](http://www.glasdon.com)

# CONCLUSION

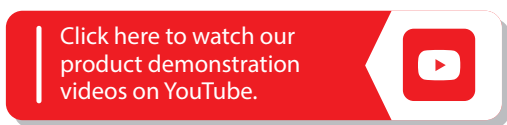
While a significant change in recycling and waste disposal policies can be a challenging time for businesses, big and small, it doesn't have to be. Glasdon is here to help. Not only do our contemporary and long-lasting recycling solutions offer a great way to update the waste management in your business, we also offer expert guidance on a variety of topics, from how to safely and efficiently dispose of food waste to what to look out for when setting up or rejigging your waste management programme.

## IMPLEMENT YOUR RECYCLING PROGRAMME, TODAY

For more assistance and information about how your business can implement a programme, please contact us today and talk to our team of experts.



[www.glasdon.com](http://www.glasdon.com)



EST. 1959

### ALSO AVAILABLE FROM GLASDON...



Nexus® 100 Duo Recycling Station



Modus™ Housing