



Wales Workplace Recycling Regulations:

Is Your Business Ready?



www.glasdon.com

In Wales, from 6 April 2024, it will become law for all businesses – including charities and public sector organisations - to separate certain recyclable materials and arrange collection for recycling.

Are these upcoming regulations set to affect you?

WHAT IS THE NEW RECYCLING POLICY?

The upcoming regulations will establish separation requirements for six distinct recyclable materials. Each material must be disposed of separately in its designated waste stream and kept separate prior to collection for processing.¹

In addition to the updated separation guidelines, there will also be restrictions on various waste disposal methods. These include all forms of food waste being sent through sewers, separately collected waste being sent to either incineration or landfills, and wood waste being sent directly to landfills.²

The overarching goal is to revolutionise the process of disposing and collecting recyclable materials, enhancing their quality and increasing the amount that can be recycled. Ultimately, this effort will keep materials in circulation for longer periods, opening up valuable economic and environmental prospects. In line with this goal, the Welsh Government has set a national target to recycle 70% of its waste by 2025 and eventually become a zero-waste nation by 2050.³

Did You Know?

Wales is currently third in the world when it comes to recycling waste from households.

The aim is to build on the success of household recycling and ensure high recycling rates across workplaces too.

¹ <https://www.gov.wales/workplace-recycling>

² <https://naturalresources.wales/about-us/news-and-blogs/blogs/separated-waste-collections-for-workplaces/?lang=en>

³ <https://www.gov.wales/separated-waste-collections-workplaces#109934>

WHO IS AFFECTED?

These legal requirements to separate waste will affect the following*:

1

All workplaces (businesses, public sector and charitable organisations in Wales)

2

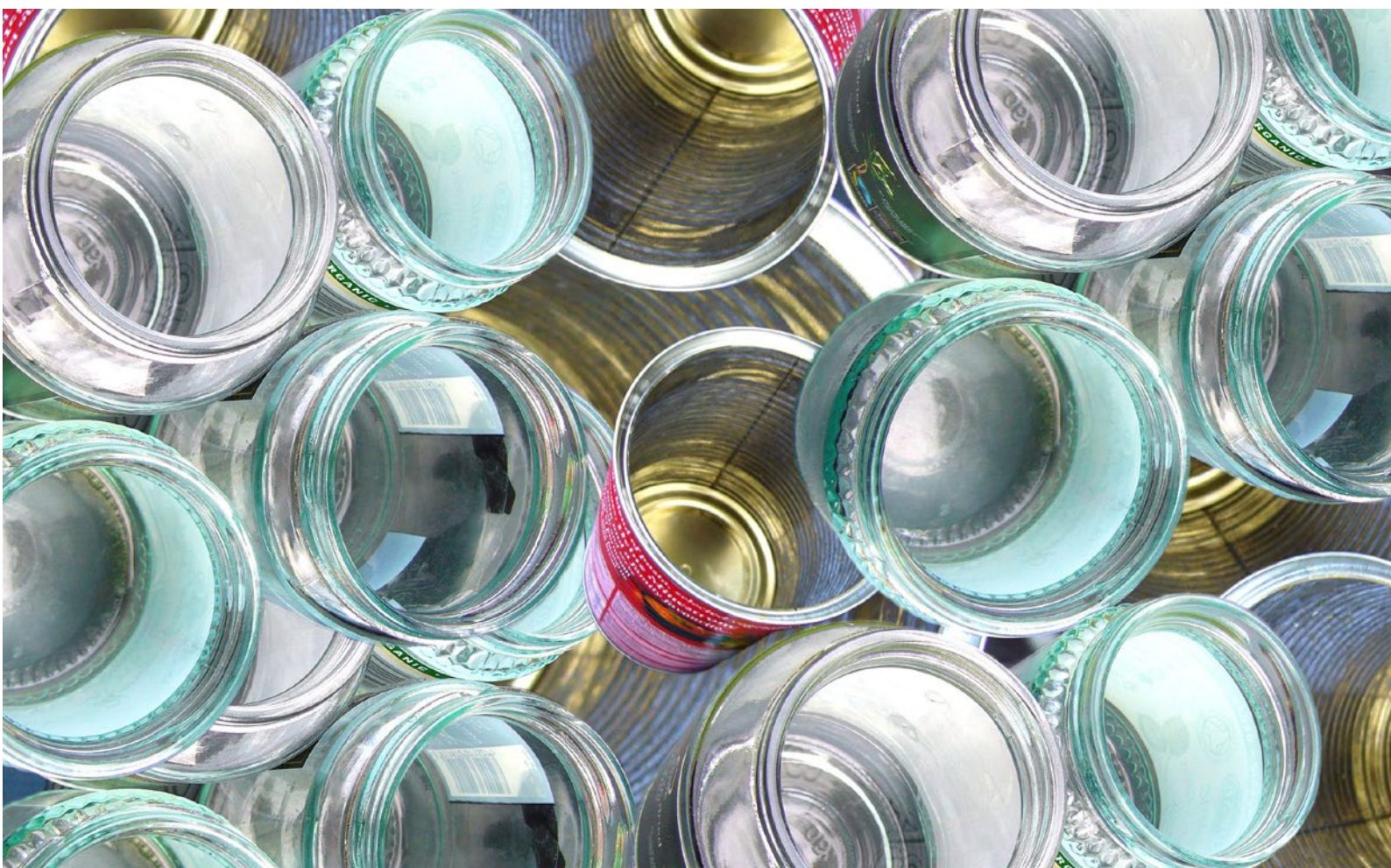
Those who collect the waste, or arrange for waste to be collected

3

Those who collect, receive, keep, treat, or transport waste will need to keep the waste separate from other types of waste or substances

Full details of commercial requirements can be found on the Welsh Government website [here](#).

*NHS hospitals and private hospitals will have an additional 2 years to comply with the new legislation.



WHAT WASTE WILL NEED TO BE SEPARATED?

To adhere to the new laws, targeted materials must be segregated at the point of disposal. For this to happen, dedicated tools are required. While some businesses may have these tools already, the implementation of six specific separation requirements may necessitate acquiring additional ones.

As a manufacturer and supplier of high-quality waste solutions, we are present to assist your organisation in selecting the appropriate recycling bins. Below, we will identify the six materials in target and offer suitable Glasdon solutions to effectively collect this waste.

The six specified recyclable waste materials to be targeted for separate collection are:



1 FOOD WASTE – for premises producing more than 5kg of food waste a week

Our tailored food waste bins are specifically designed for the catering industry, including hotels, restaurants, and cafes as well as food preparation and consumption areas. Featuring foot pedals and spacious openings, our bins ensure effortless and sanitary disposal of food waste.

The Nexus® Shuttle is a versatile catering bin with three liner options to suit your indoor operational environment. Collect up to 60 litres (25.5kg) of waste with the standard sack retention model or utilise the adjustable shelf to limit the waste and collect up to 30 or 40 litres of waste.

To address outdoor food waste, consider the Combo™ Waste Bin. This large apertured container can collect up to 140 litres (59.5kg) of waste, whilst its robust and durable design ensures it can withstand extreme temperatures and various weather conditions.



Nexus® Shuttle Food Waste Bin



2 PAPER AND CARD

We have a variety of confidential paper waste bins available to help businesses capture and safeguard their paper waste. These lockable bins come in different styles and capacities, making them the perfect accompaniment for any office.

The Nexus® 30 is perfect for convenient and efficient paper recycling, thanks to its compact size. Its slim design allows it to fit neatly under or beside desks. For those with high volumes of paper waste, the preferred option is the Nexus® 140. This product utilises a fully removable door to minimise the need to lift sacks during emptying.

3 GLASS

Our range provides various alternatives for glass waste management, both indoors and outdoors. As for Indoor recycling options, the contemporary Electra™ 60 Mixed Glass recycling bin is a perfect choice for offices and canteens with its modern design. It is made with an Armortec®-coated steel frame and Vandalex® panels to withstand vandalism and ensure long-lasting durability.

For a recycling option in outdoor settings, the Modus™ 770 Mixed Glass Recycling Housing is worth considering. This housing is designed for commercial areas with heavy foot traffic such as retail parks and promenades.



Recently, we joined in with the Caru Cymru movement to Keep Wales Tidy in the town of Chepstow.

They used our personalisation services to turn words into action and demonstrate their ambitions to protect the environment and their local wildlife. They transformed their Modus unit into a bright and engaging 50/50 waste stream dedicated to capturing both mixed glass and cans & plastic bottles.



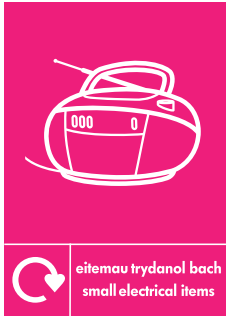
METAL, PLASTIC, CARTONS AND OTHER FIBRE-PLASTIC BASED PACKAGING – including plastic bottles & lids and steel & aluminium drinks cans

Our selection of plastic bottles and metal can recycling bins and units are designed to assist in collecting single-use drink containers. These highly visible and spacious recycling bins are perfect for various food-related spaces, such as canteens, cafes, and schools, where frequent monitoring is necessary.

A greater example is the C-Thru™ 180 Plastic Bottle Recycling Bin and the alternative Can Recycling Bin. Our selection of plastic bottles and metal can recycling bins and units are designed to assist in collecting single-use drink containers. These highly visible and spacious recycling bins are perfect for various food-related spaces, such as canteens, cafes, and schools, where frequent monitoring is necessary.

In addition to our single-stream solutions, we also provide equally effective multi-stream recycling bins. These bins can not only save floor space, but they can also be a budget-friendly option.

The Nexus® 100 Recycling Bin Range is an exceptional example, combining 2 x 50-litre capacity containers of all the major waste streams, including Can/Plastic Bottle recycling. Collect both materials inside one sleek design without taking up valuable floor space, whilst a drip tray in the base of the door sees the prevention of waste liquid from leaking.



5 UNSOLD SMALL ELECTRICAL AND ELECTRONIC EQUIPMENT (SWEEE)

This can include a variety of discarded or unsold equipment or electrical waste, such as video cameras and toasters to printers and routers.

6 UNSOLD TEXTILES

Targeting unsold textiles such as; clothing, mattresses, soft furnishings, carpet, rugs and leisure textiles. Any waste textiles that contain hazardous substances may not be suitable for recycling and must be appropriately managed.



WHAT ELSE?
We're here
to help.

Given that most businesses will encounter these designated materials, business owners can act now to initiate or consider solutions for proper waste segregation before the implementation date arrives.

If you need further assistance in purchasing the right recycling bin for your organisation, take a look at our useful [How Do I Choose a Recycling Bin Guide](#) to answer some of the most commonly asked questions about selecting a recycling bin that suits your recycling programme.

If your organisation doesn't already follow a recycling programme, now is the perfect time to introduce one. Our recycling eBook to [Creating a Successful Recycling Programme](#) will provide you with all the information you need to create and action an efficient and effective waste programme within the workplace.



OTHER SOLUTIONS TO CONSIDER

In addition to implementing specialised waste solutions, what other preparations can your business make for the upcoming April 6th deadline?



HERE ARE A FEW PRACTICAL MEASURES TO CONSIDER:



Conduct a Waste Audit

Before deciding on a strategy, it is important to identify the type and amount of waste your organisation produces. This will help you determine the necessary bins, collection services, and training needs.



Viable Bin Placement

When implementing a successful recycling programme, it is important to carefully consider the placement of recycling options. This is not only essential for efficient waste collection but also encourages employee participation. Bins should be conveniently located and clearly visible for all staff members, as well as in high-traffic areas for optimal usage.



Contact a Waste Contractor

Make sure they can collect your separated recycling. You may want to contact other waste collectors to choose the most suitable services for you at the best price.



Train Your Staff

Make recycling an integral part of your company culture. Conduct training sessions to educate employees on the new regulations, the importance of recycling and proper sorting techniques.



Communicate and Encourage

Keep your employees informed about the new regulations and their role in achieving the company's sustainability goals. Celebrate successes and track progress to maintain motivation and engagement.

READY TO IMPLEMENT YOUR RECYCLING SCHEME?



At Glasdon, we offer a variety of multi-stream and single-stream recycling containers. We are confident that our wide range of recycling bins will help you to reduce your environmental and economic impact. So, no matter which recycling programme you decide is the best fit for your organisation, we are sure to help you find the best containers to kickstart your scheme.

Maximise the functionality of your office by utilising our collection of indoor recycling containers, designed to create an attractive recycling station. These containers serve as a great tool for boosting recycling rates and minimising contamination within your company.



Nexus® Stack Recycling Bin



Nexus® Evolution Quad Recycling Station



Nexus® Style Recycling Station

PRODUCTS TO SUIT YOUR NEEDS

Glasdon commercial recycling bins are designed to help you create an effective indoor or outdoor recycling programme. We manufacture the widest range of recycling bins in a variety of materials, styles and capacities to suit the needs of your organisation.





From adding your organisation's logo or crest, right through to full graphic wraparounds, we have the in-house expertise to help you achieve the impact you require. We also offer a free visualisation service.

If you have any questions at all or would like to find out more about the service and personalisation options available for our wide range of products before you place your order, please contact us or use the live chat feature on our website, today.

We also provide outdoor recycling options suitable for external environments. They require low maintenance and are resistant to corrosion.



Modus™ Housing



Nexus® City 140 Recycling Bin



Nexus® Evolution City Quad Recycling Station

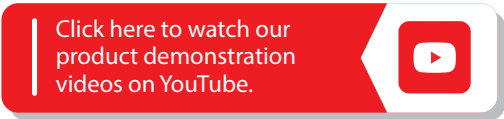


IMPLEMENT YOUR RECYCLING PROGRAMME, TODAY

For more assistance and information about how your business can implement a programme, please contact us today and talk to our team of experts.



www.glasdon.com



ANNIVERSARY 1959-2024 **65** YEARS