



FIDO™ BIN

Dog Waste Bin Installation Instructions

PERMANENT WALL MOUNTING

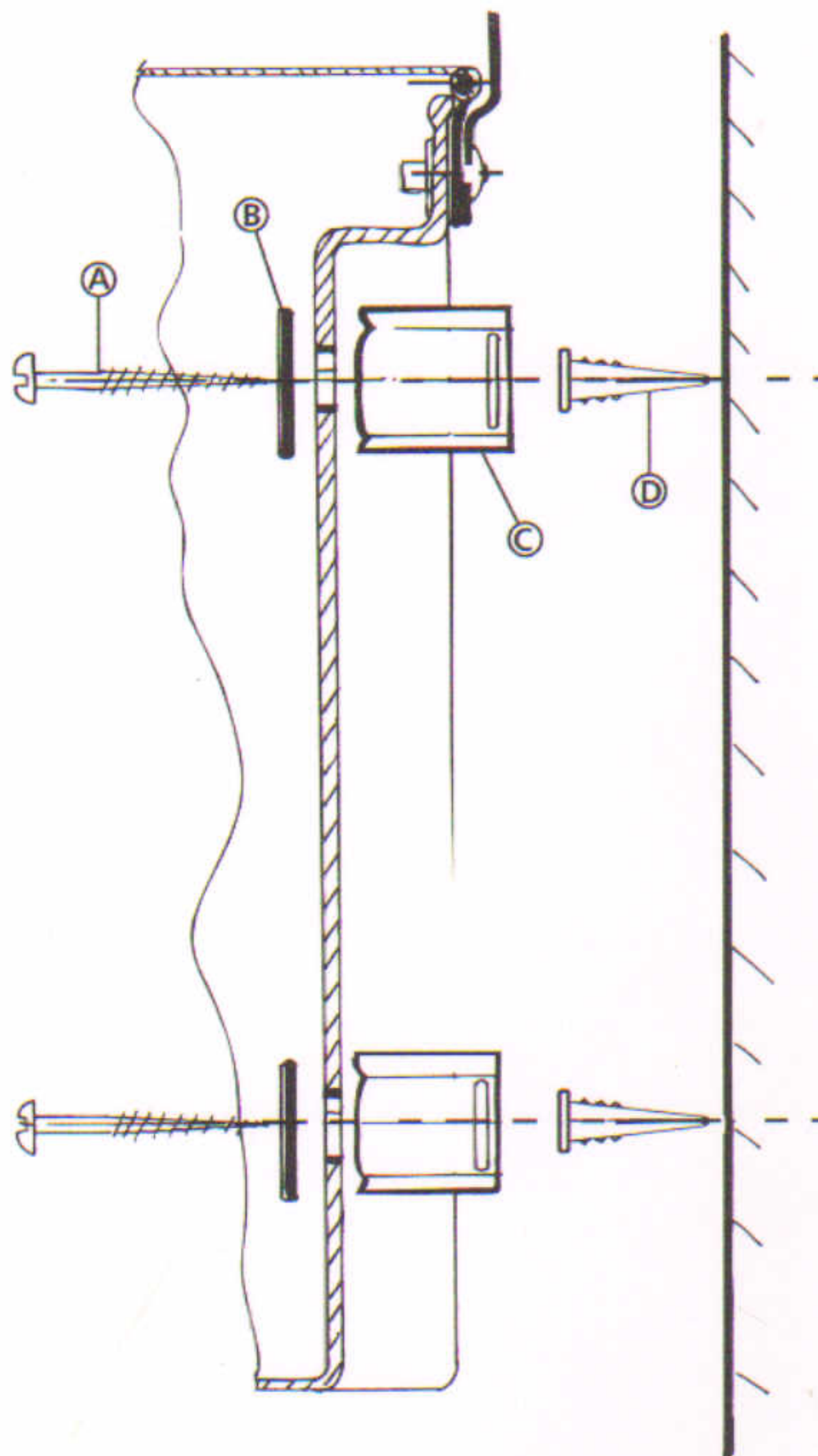
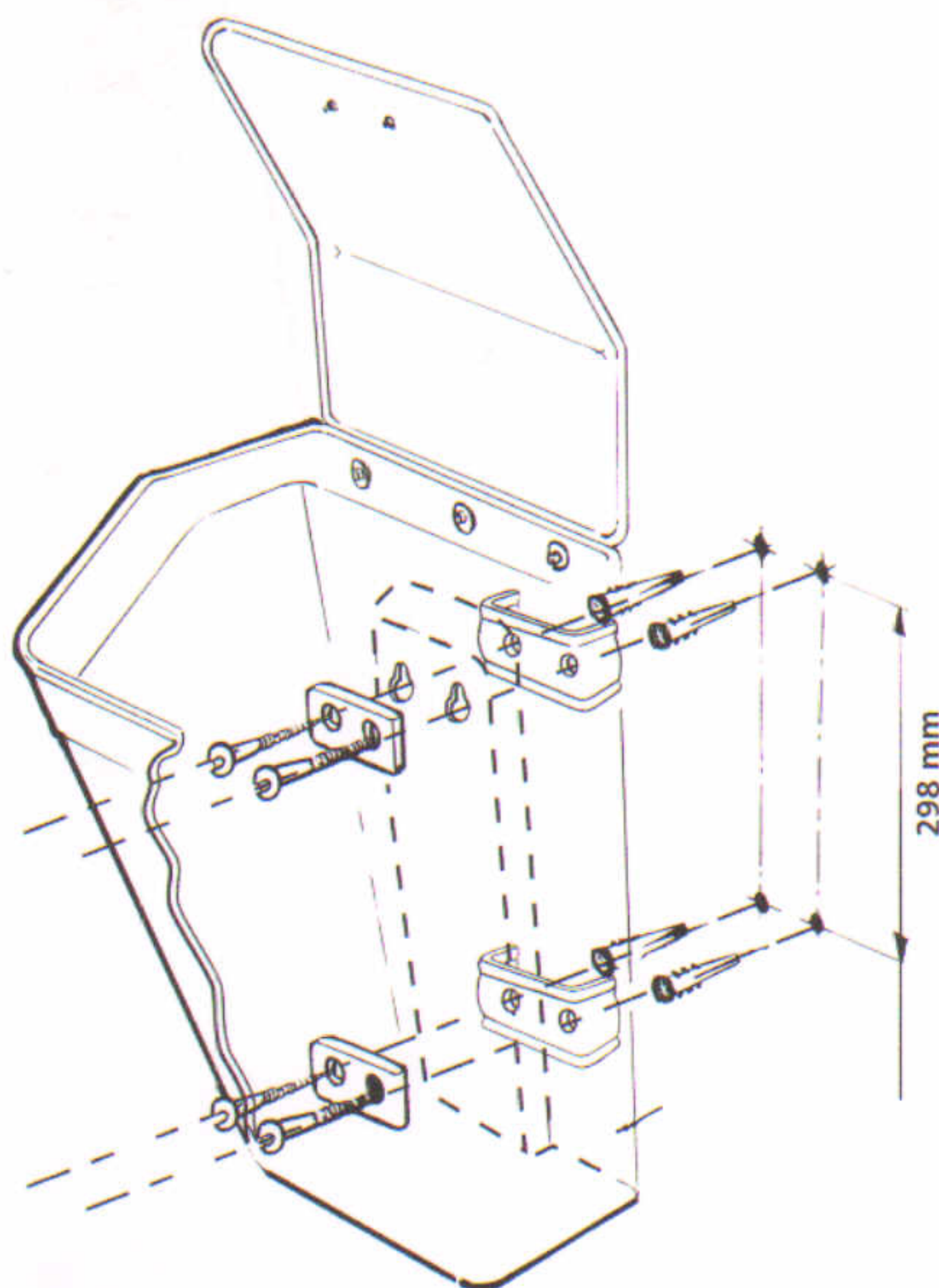
IMPORTANT NOTE:- ENSURE THAT ALL RELEVANT PERSONNEL READ THE POINTS LISTED BELOW AND THAT A COPY IS PASSED ON TO STAFF INVOLVED WITH THE INSTALLATION

YOU SHOULD HAVE

- A- Screws number 12 x 2.5" Round Head Screws x 4
- B- Two Hole Washer Plates x 2
- C- 'C' Type Brackets x 2
- D- No. 12 wall plugs x 4

EQUIPMENT NEEDED


- Electric/Cordless Power Drill + Safety Glasses
- Masonry Drill Bit Number 14 (9.32")
- Hammer
- Screwdriver



Method

- 1 Using two-holed washer plates as a template mark drill position holes on to the wall at the desired height. ENSURE THAT BOTH SETS OF FIXING HOLES ARE MARKED VERTICALLY BELOW EACH OTHER AND ARE THE CORRECT DISTANCE APART AS SHOWN
- 2 Drill and plug wall ready to accept screw fixings
- 3 Assemble washer plates, and secure from inside the bin in both top and bottom positions.

- A planned maintenance schedule of regular inspection is recommended, replacing components as necessary.
- Replacement components are available direct from GLASDON.
- GLASDON cannot be held responsible for claims arising from incorrect installation, unauthorised modifications or misuse of the product.

 Glasdon® AND FIDO™ ARE TRADEMARKS OR REGISTERED TRADEMARKS OF GLASDON GROUP OR ITS SUBSIDIARIES IN THE U.K. AND OTHER COUNTRIES



Glasdon®

Glasdon U.K. Limited

Preston New Road
BLACKPOOL
Lancashire
FY4 4UL

Tel: (01253) 600410

Fax: (01253) 792558

e-mail: sales@glasdon-uk.co.uk

web: www.glasdon.com