



# GROUND LOCK™ PAVING SLAB REINFORCING KIT

## INSTALLATION INSTRUCTIONS

Note:- Ensure that all relevant personnel read the points listed below and that a copy is passed on to the staff involved with the installation

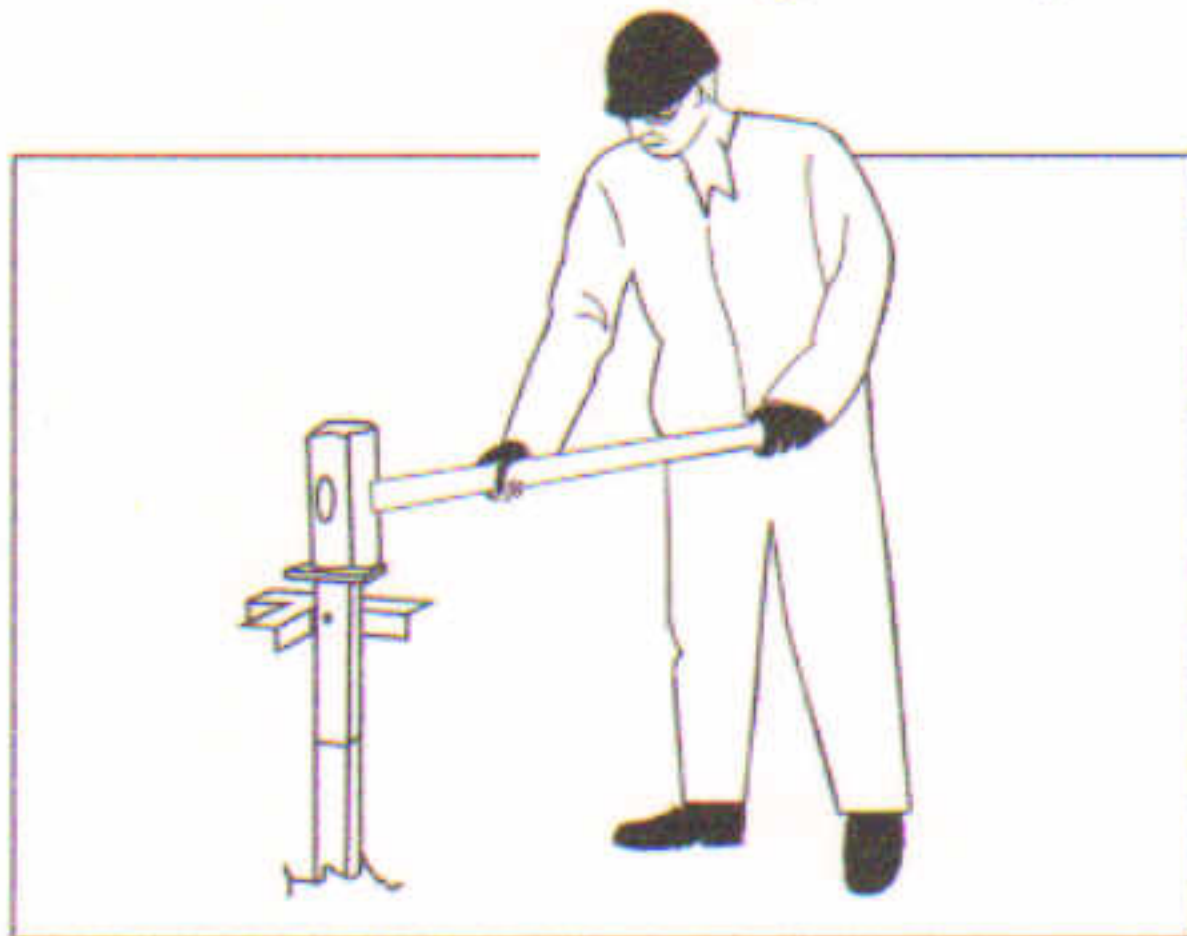
**IMPORTANT:** WHEN SELECTING A SITE, ENSURE THERE ARE NO BURIED SERVICES. PRIOR TO STARTING INSTALLATION PLEASE REFER TO 'THE MANUAL HANDLING OPERATIONS REGULATIONS 1992'.

### You should have:

- 1 1 Ground -Lock fixing system + Installation tool x 1.
- 2 1 Concrete paving slab pre-drilled 600 x 600 x 50mm thick x 1.
- 3 M8 x 100mm long hexagon bolts (Bright zinc plated) x 3
- 4 M8 metal washers (Bright zinc plated) x 3.

### Equipment needed for installation:

- 1 Sledge hammer + gloves.
- 2 13mm tube spanner.



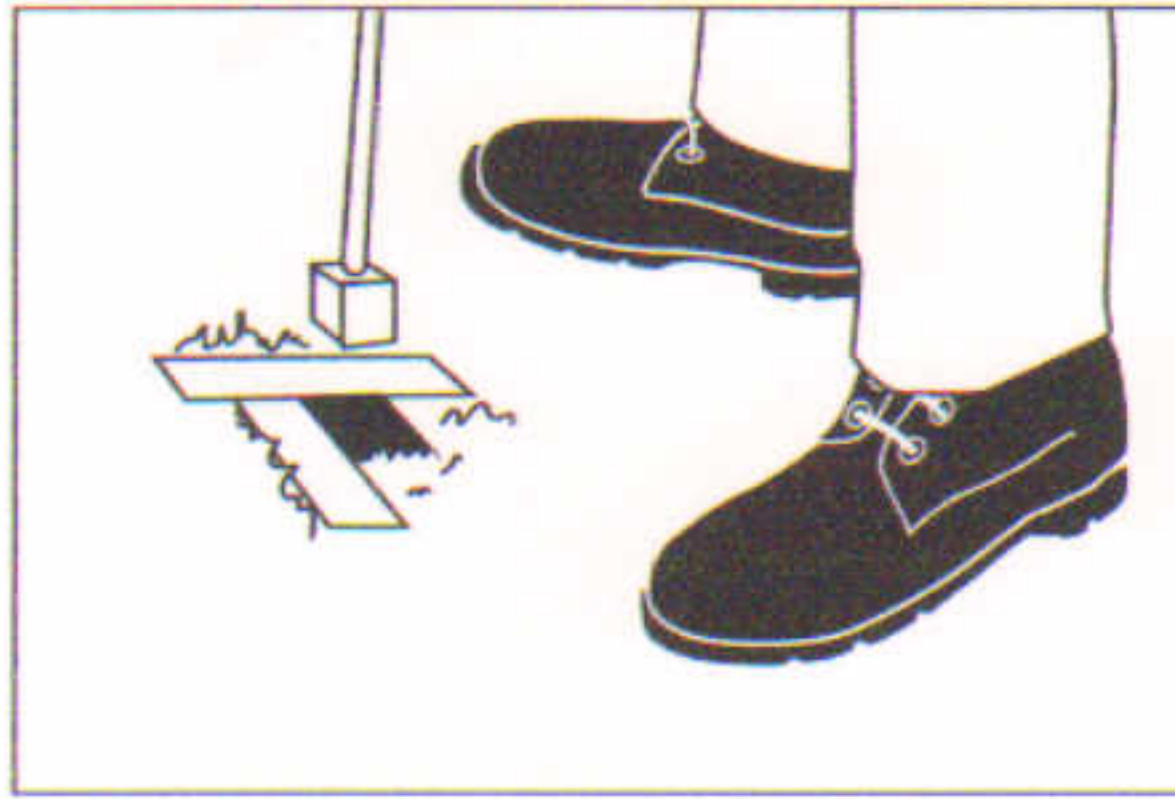
#### STAGE ONE

Please ensure that before siting the ground - lock the correct orientation of the fixings to match the final position of the litter bin is observed.

Push the socket spike into ground in a vertical position and insert the installation cap into the socket.

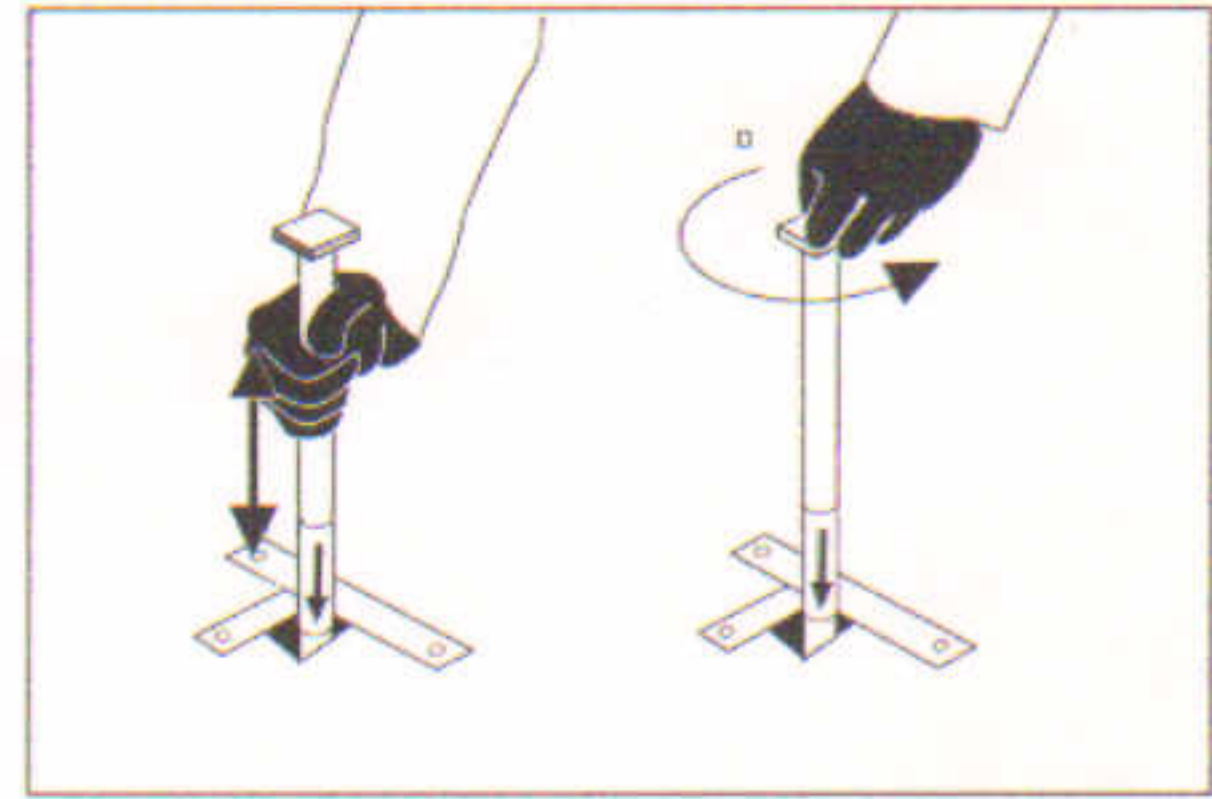
**NOTE:** in hard ground conditions, a two man operation may be required to achieve satisfactory installation.

Hammer the socket into the ground with even strokes until the horizontal brackets (affixed to the top of the socket) are level with the ground. Remove and retain cap for future use.



#### STAGE TWO

Take the socket block, and screw clockwise to the end of the special insertion tool. Ensure block is screwed hand tight to the end of the thread. Then using the tool, insert the block into the socket.

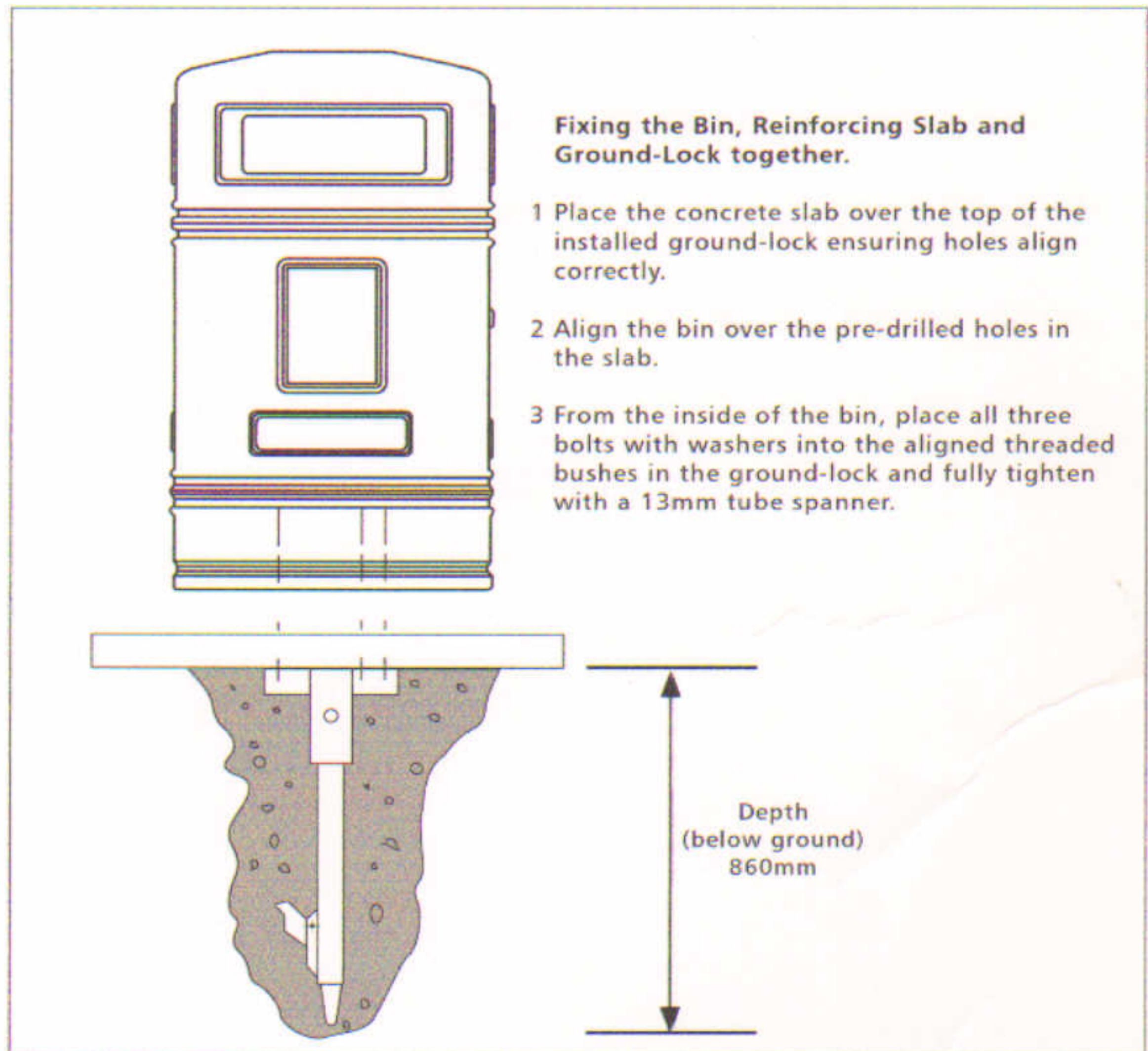


#### STAGE THREE

Ram the 'ground lock' into position. When the red arrow on the tool is level with the top of the socket, the 'ground lock' is fully engaged. Twist the tool anti-clockwise to separate from the block, then remove and retain for future use.

#### Fixing the Bin, Reinforcing Slab and Ground-Lock together.

- 1 Place the concrete slab over the top of the installed ground-lock ensuring holes align correctly.
- 2 Align the bin over the pre-drilled holes in the slab.
- 3 From the inside of the bin, place all three bolts with washers into the aligned threaded bushes in the ground-lock and fully tighten with a 13mm tube spanner.



- A planned maintenance schedule of regular inspection is recommended, replacing components as necessary.
- Replacement components are available direct from GLASDON.
- GLASDON cannot be held responsible for claims arising from incorrect installation, unauthorised modifications or misuse of the product.

Glasdon® AND GROUND LOCK™ ARE TRADEMARKS OR REGISTERED TRADEMARKS OF GLASDON GROUP OR ITS SUBSIDIARIES IN THE U.K. AND OTHER COUNTRIES

Issue 2 November 2005 Stock no. C000/0219  
© Copyright November 2005.

Glasdon reserve the right to alter specification without prior notice.



#### Glasdon U.K. Limited

Preston New Road  
BLACKPOOL  
Lancashire FY4 4UL

Tel: 01253 600410  
Fax: 01253 792558  
e-mail:sales@glasdon-uk.co.uk  
web:www.glasdon.com