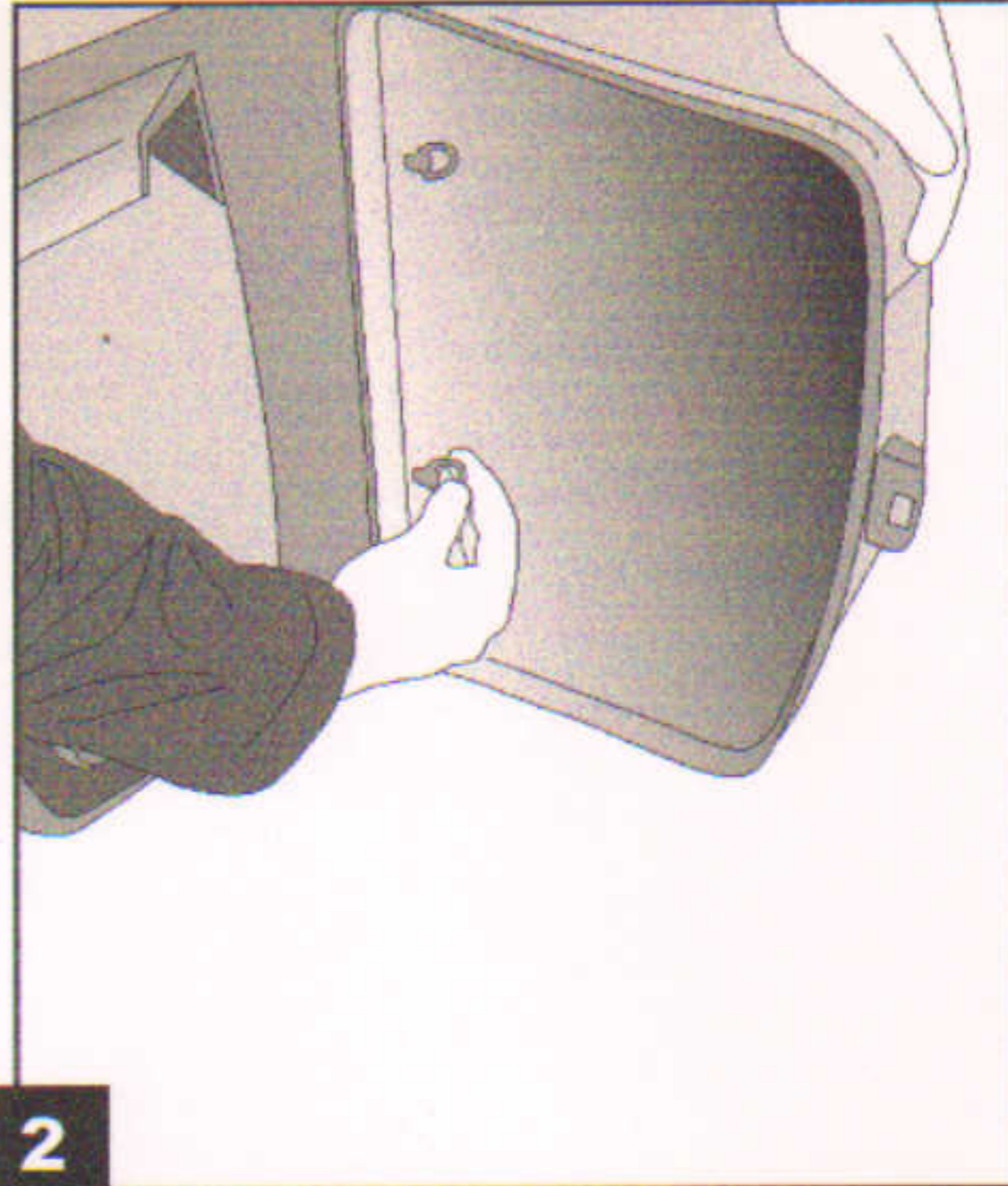




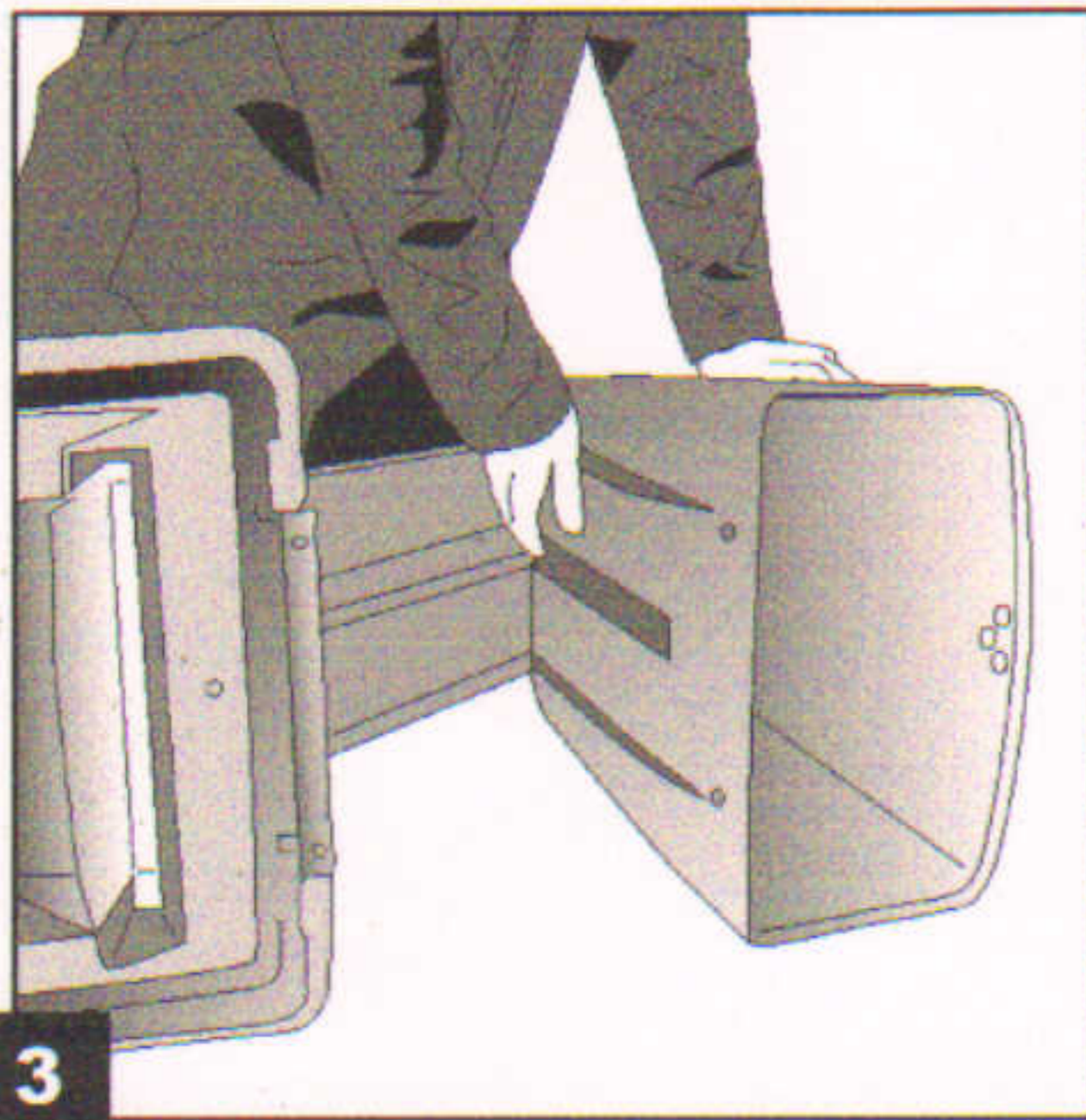
**1**

Open Retriever 35 lid with key.



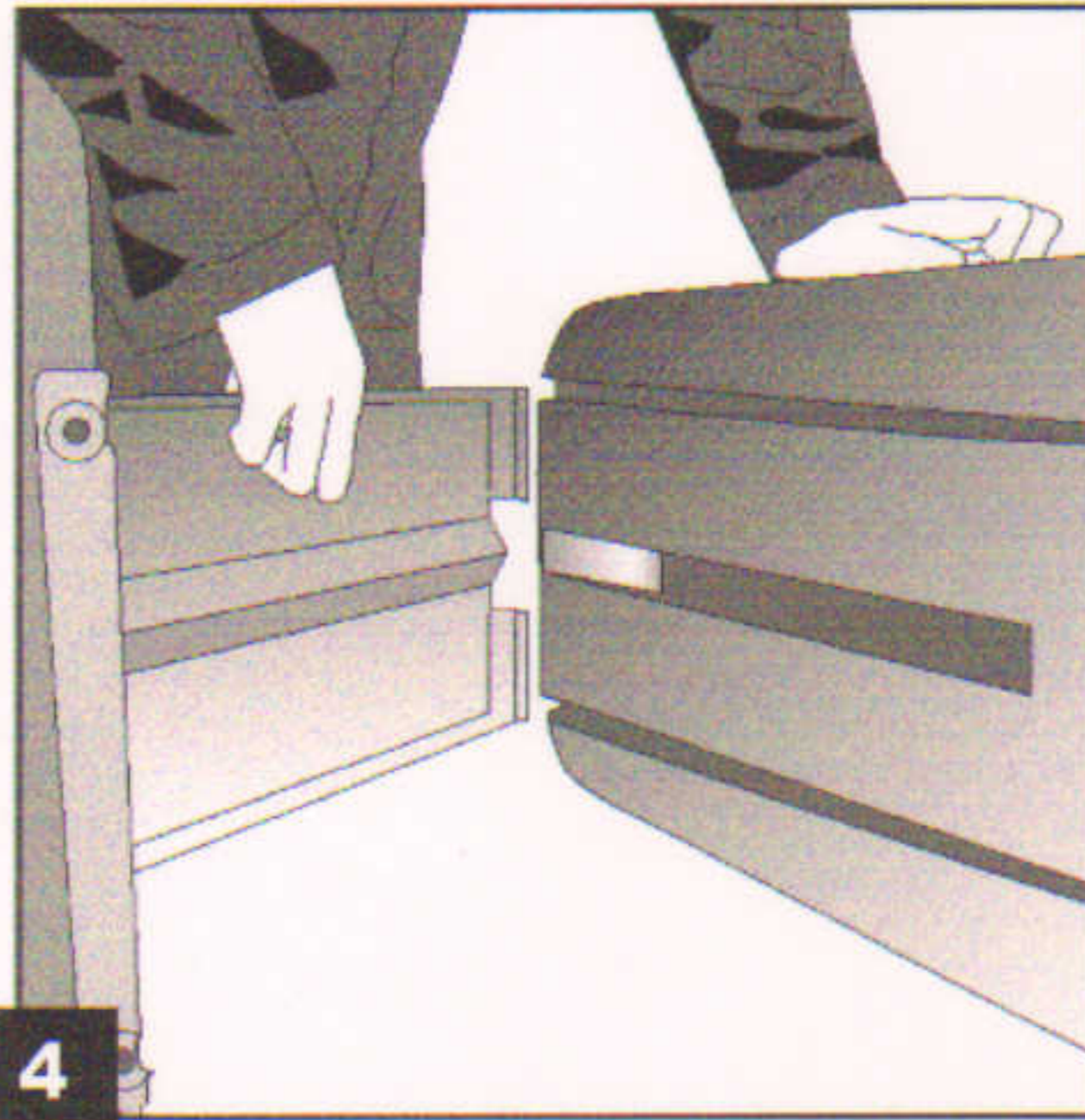
**2**

Release ¼ turn fasteners to part-separate bin from metal spine.



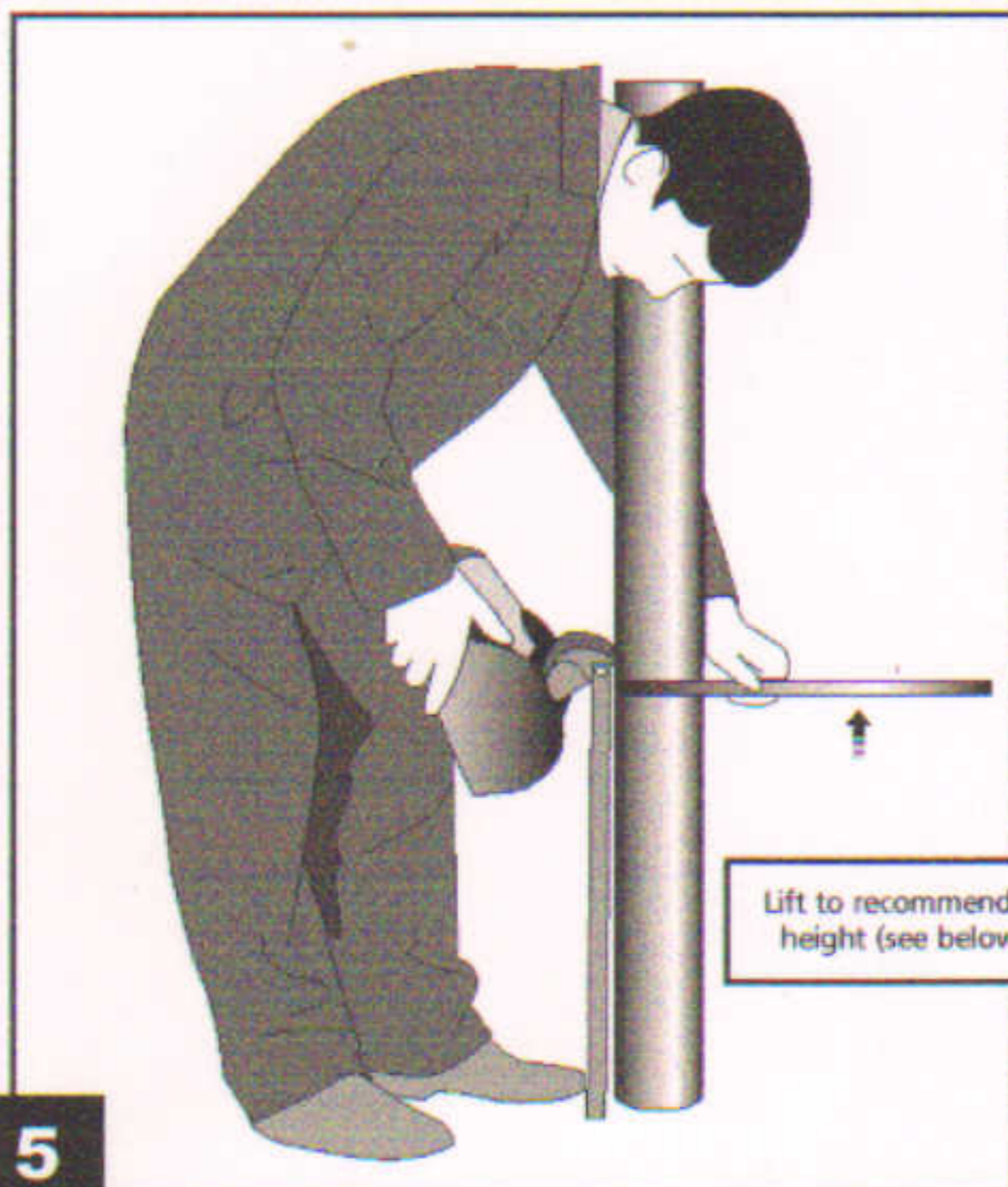
**3**

Depress spring clip from spine.



**4**

Fully separate bin body.

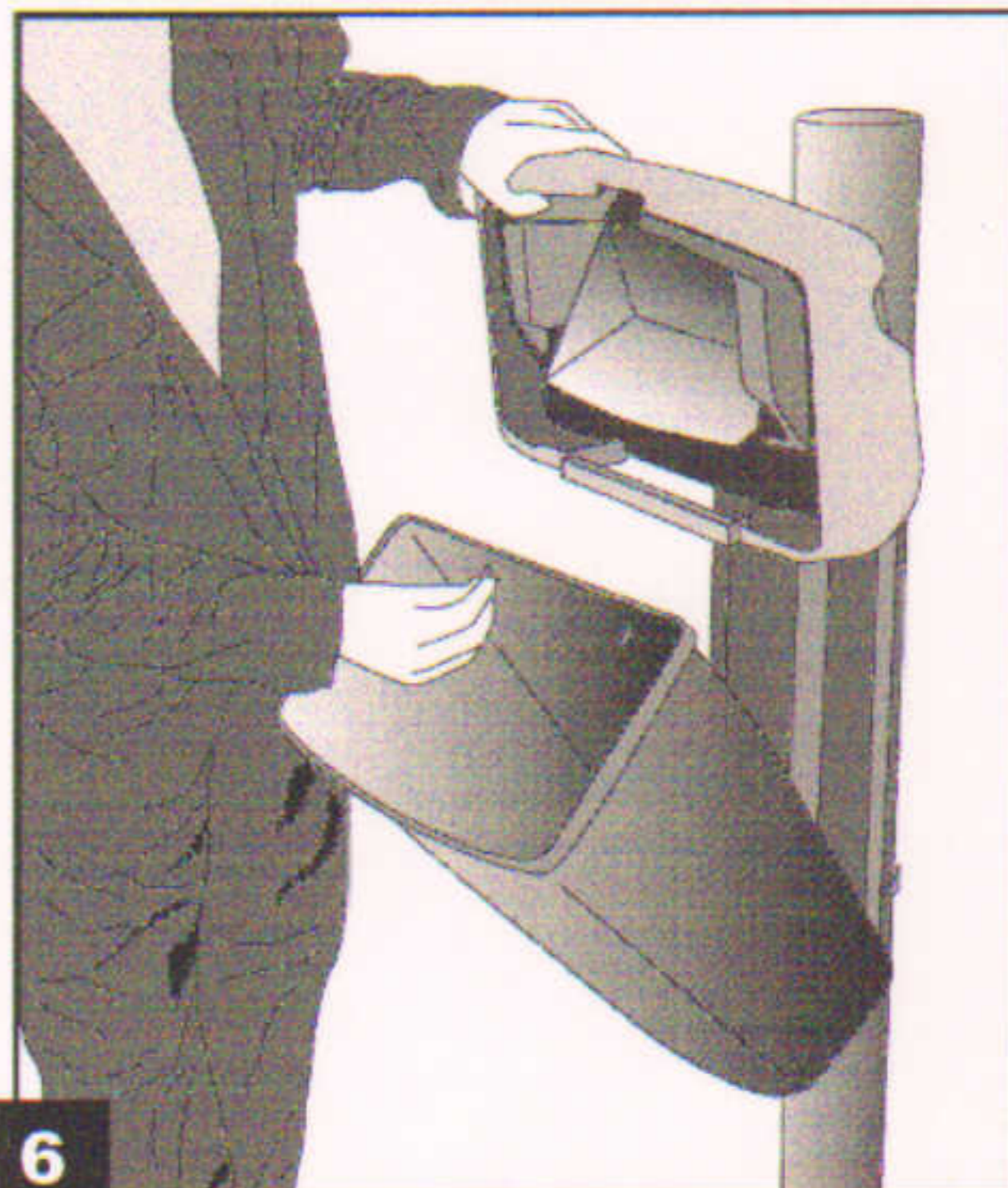


**5**

Thread banding through top slots in the spine and offer lid/spine to the post. With the top of the unit at a recommended height of 1.2m from ground level, tighten top banding.

Thread banding through lower set of slots (various slot positions are provided to enable you to avoid lamppost inspection covers etc.)

Lift to recommended height (see below)



**6**

Re-attach bin body to spine using bottom spring clip and ¼ turn fasteners. Finally tighten bottom fixing.

\*We recommend standard 16" refuse sacks for Retriever 35.



# RETRIEVER 35™

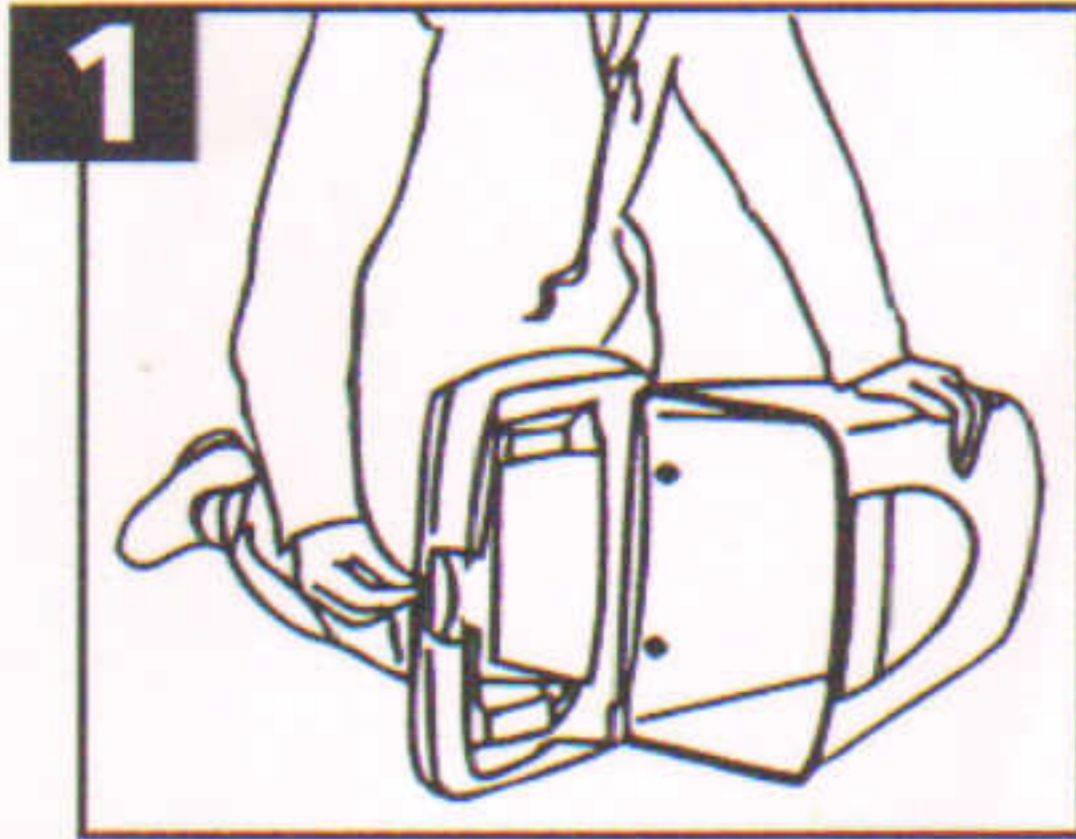
## User Installation Instructions

### WALL MOUNTING

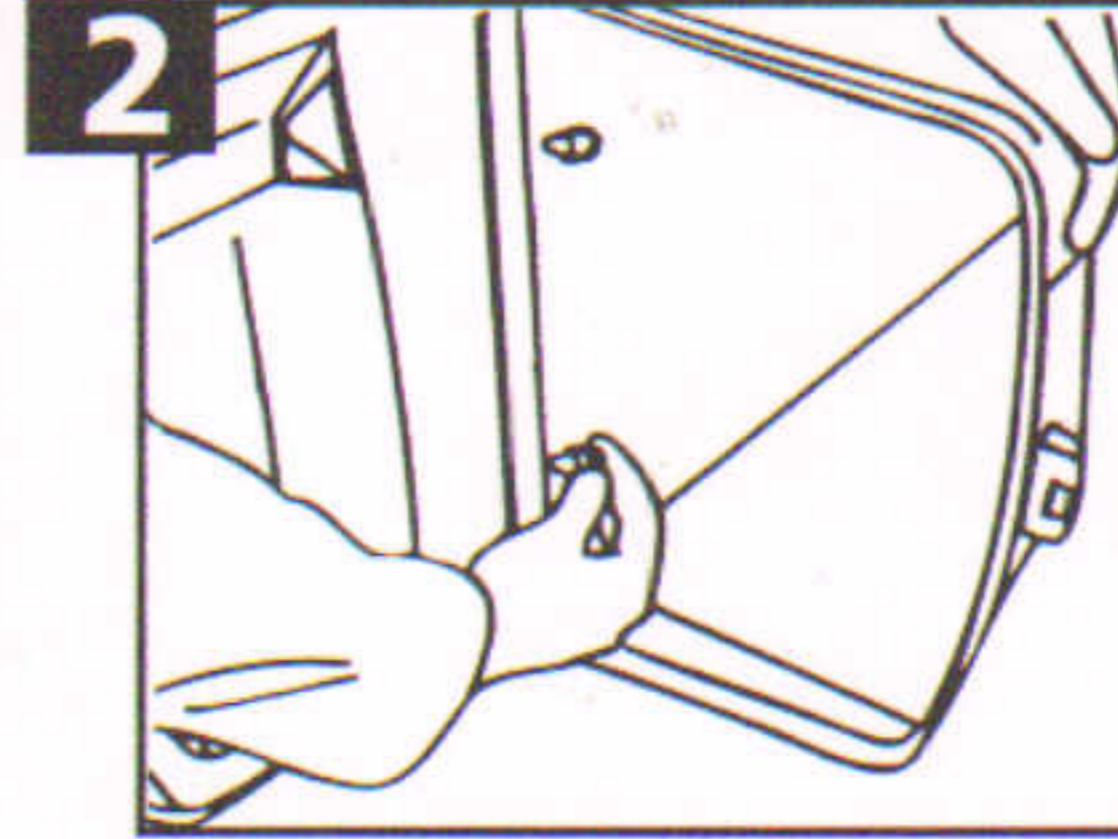
**IMPORTANT NOTE:- ENSURE THAT ALL RELEVANT PERSONNEL READ THE POINTS LISTED BELOW AND THAT A COPY IS PASSED ON TO STAFF INVOLVED WITH THE INSTALLATION**

- KIT CONTENTS:**
- 1) Wood screw 1.5" x 12 slotted round head x 4
  - 2) Rawl plug No. 12 x Ø8 x 45mm long x 4
  - 3) Metal washer M6 x Ø25mm x 4

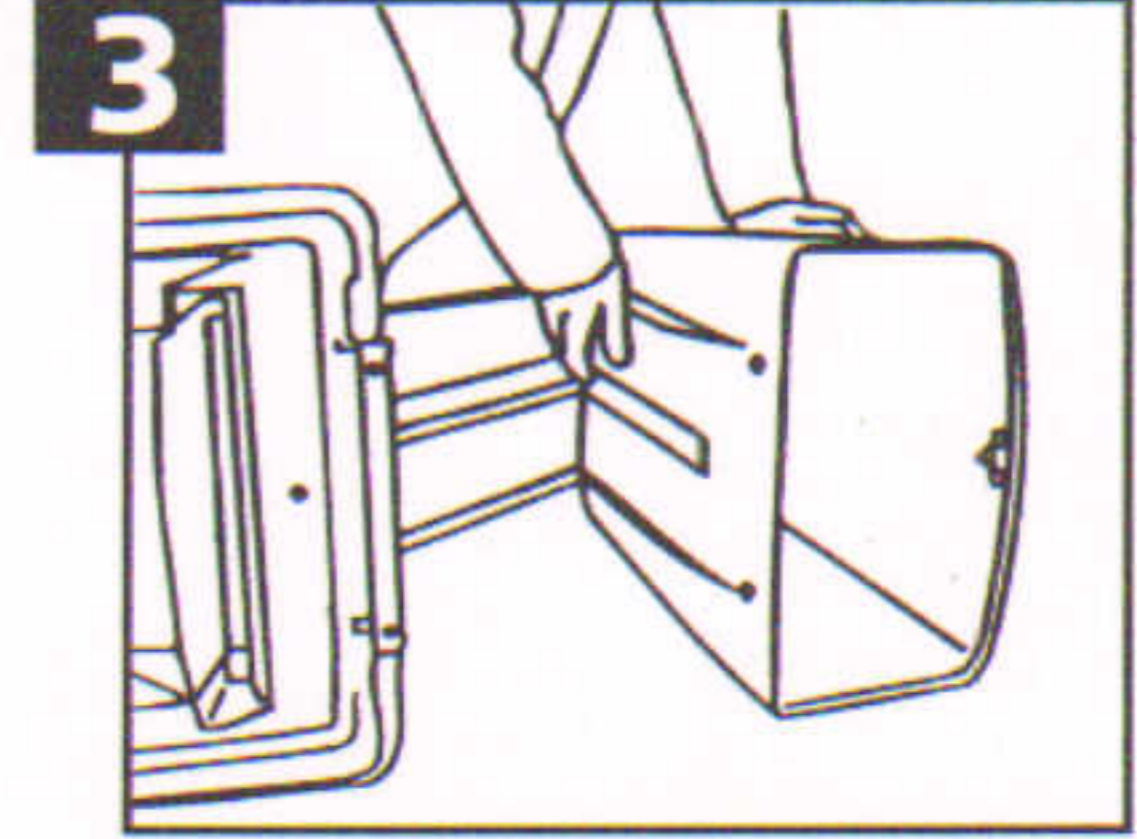
- EQUIPMENT REQUIRED:**
- Screwdriver
  - Masonry drill (8.0mm)
  - Tape measure
  - Marking pen



1 Open the Retriever lid with the key provided.



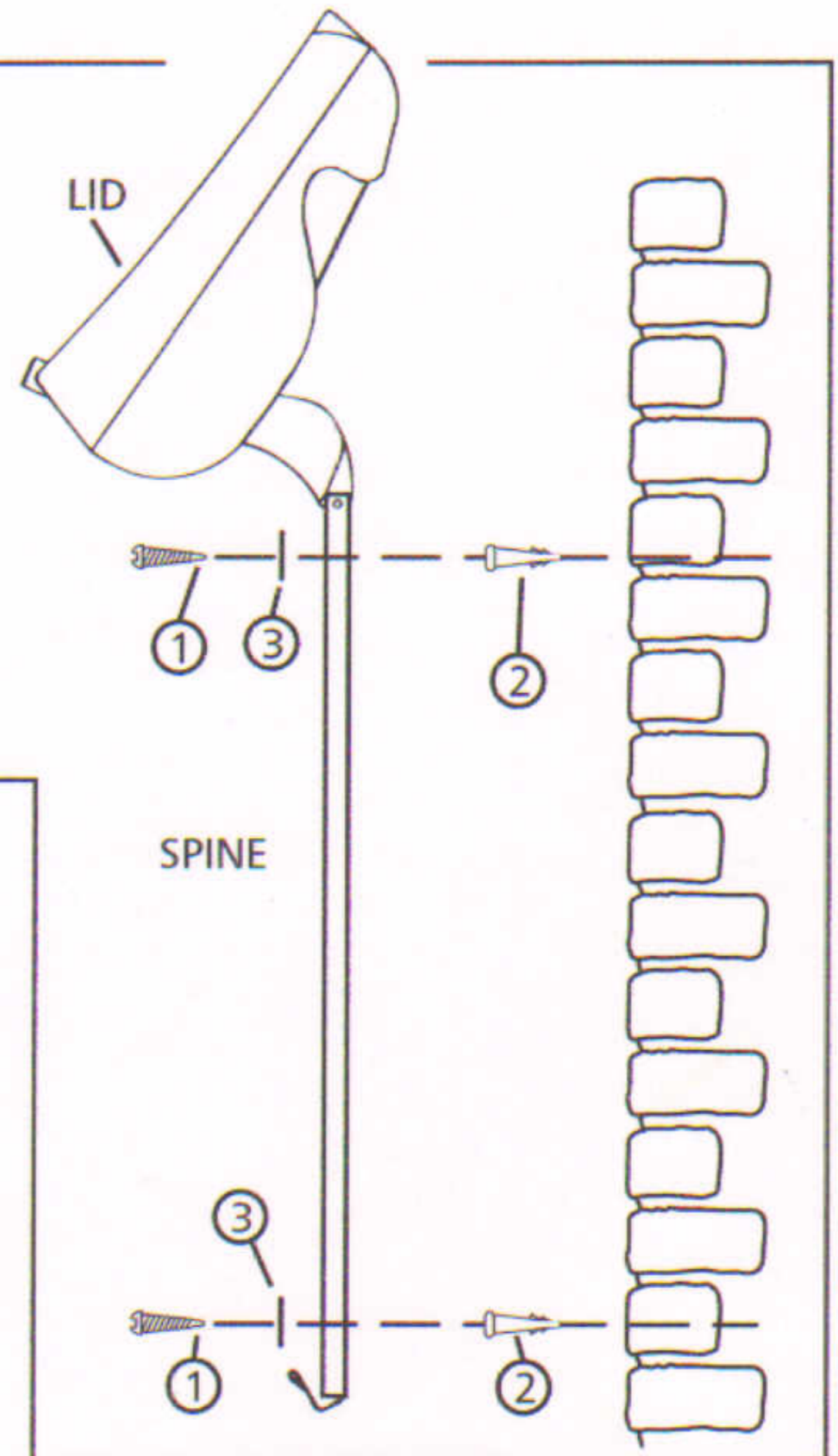
2 Release the quarter turn fasteners to part separate the bin from the spine.



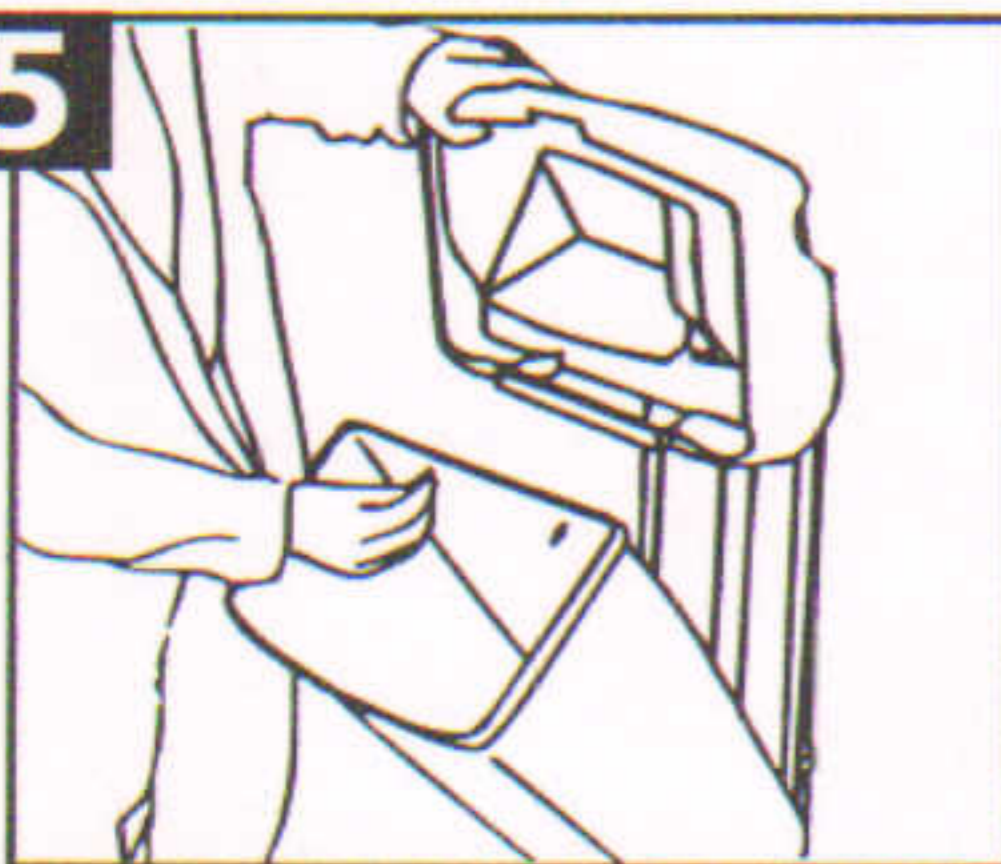
3 Depress the base spring clip from the spine and lift away the bin body.

4

- a) Offer the rear of the spine up to the wall area -  
NOTE: Mounting the bin to a height of 1.2m from the ground level to the top of the bin is recommended.
- b) Mark the wall through the holes in each corner of the spine ensuring the assembly is horizontal.
- c) Place the assembly to one side, drill and plug the wall in all four positions.
- d) Offer the rear of the spine up to the wall, insert washer (3) onto each screw (1) and screw all four points securely into the wall.



5



5 Re-assemble the bin body back to the spine engaging the base spring clip firstly followed by securing both quarter turn fasteners at the top of the base.

- A planned maintenance schedule of regular inspection is recommended, replacing components as necessary.
- Replacement components are available direct from GLASDON.
- GLASDON cannot be held responsible for claims arising from incorrect installation, unauthorised modifications or misuse of the product.

(For post fixing instructions see reverse page.)

**Glasdon** AND RETRIEVER 35™ ARE TRADEMARKS OR REGISTERED TRADEMARKS OF GLASDON GROUP OR ITS SUBSIDIARIES IN THE U.K. AND OTHER COUNTRIES



**Glasdon U.K. Limited**

Preston New Road  
BLACKPOOL  
Lancashire  
FY4 4UL

Tel: (01253) 600410

Fax: (01253) 792558

e-mail: sales@glasdon-uk.co.uk

web: www.glasdon.com