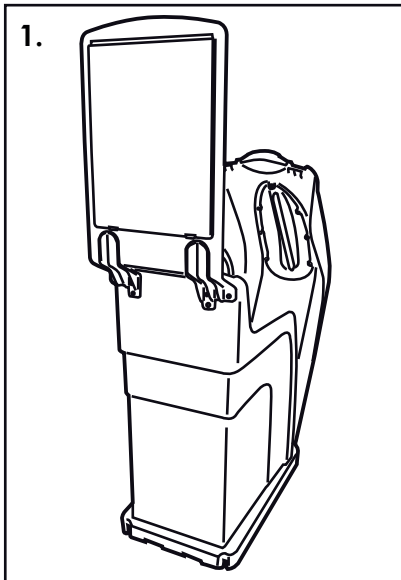


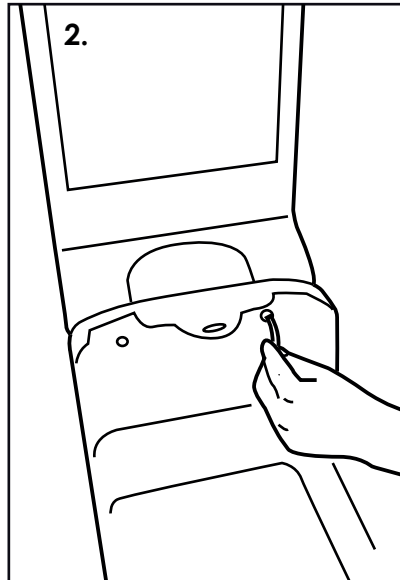
A4 MOULDED PORTRAIT SIGN KIT INSTRUCTION LEAFLET

IMPORTANT NOTE: ENSURE THAT ALL RELEVANT PERSONNEL READ THESE INSTRUCTIONS PRIOR TO USE

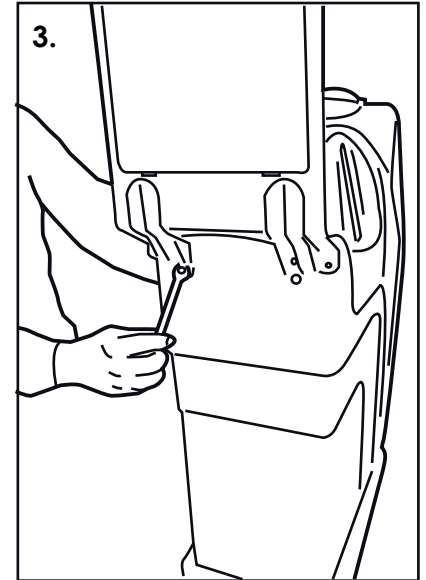
ATTACHING SIGN KIT TO YOUR NEXUS 50



Open the bin door and position the sign carrier at the rear of the bin so that the holes are aligned with the holes in the bin.

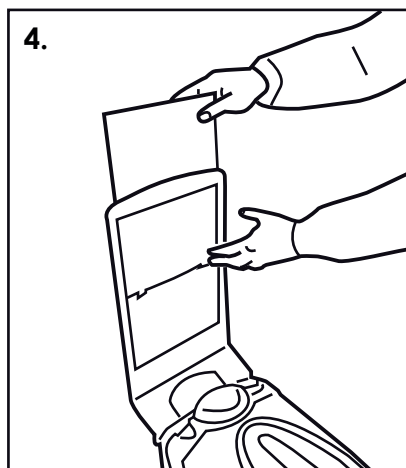


From the inside of the bin, place 4 off screws with washers provided through the holes and fix onto the back of the bin with the washers and nyloc nuts (using your fingers.)



Using a 10mm spanner and allen key tighten the nuts until secure.

INSERTING A4 SIGN



Place the A4 sign behind the clear polycarbonate sheet and slide into the sign carrier so that the lugs locate into the slots along the bottom of the sign carrier.

 **Glasdon** AND NEXUS[®] 50 ARE TRADEMARKS OF GLASDON GROUP OR ITS SUBSIDIARIES IN THE U.K. AND OTHER COUNTRIES

- A planned maintenance schedule of regular inspection is recommended, replacing components as necessary.
- Replacement components are available direct from GLASDON UK LIMITED.
- GLASDON UK LIMITED cannot be held responsible for claims arising from incorrect installation, unauthorised modifications or misuse of the product.

Issue 1 October 2012 C000/0382
© Copyright October 2012
Glasdon UK Ltd reserve the right to alter specifications without prior notice.



Glasdon

Glasdon U.K. Limited

Preston New Road
BLACKPOOL
Lancashire FY4 4UL
Tel: 01253 600410
Fax: 01253 792558
email: sales@glasdon-uk.co.uk
web: www.glasdon.com