

# INSTRUCTIONS FOR FITTING YOUR SKIPPER HANDLE BARS AND CROSS BAR

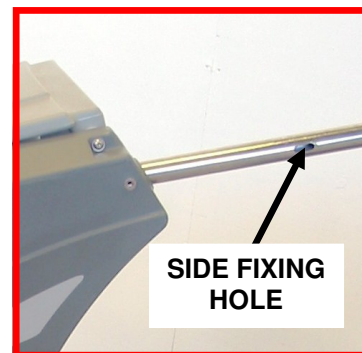
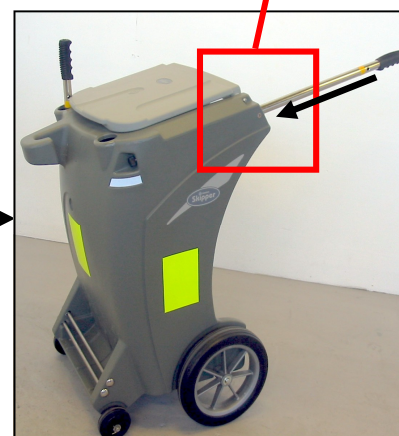
## **PARTS LIST**

2 x S/S Handle bars  
2 x Thumb screws  
2 x M6 x 40mm socket head screws  
2 x Cover caps  
2 x Cover cap rings  
1 x S/S Cross bar  
2 x Saddle washers  
2 x M8 x 50mm socket head screw  
2 x M8 washers

## **TOOLS REQUIRED**

4mm Allen key (supplied)  
6mm Allen key (supplied)

1) Making sure that the side fixing hole is facing towards the outside wall of the unit, insert the handle bar into the fixing hole at the back of the product.



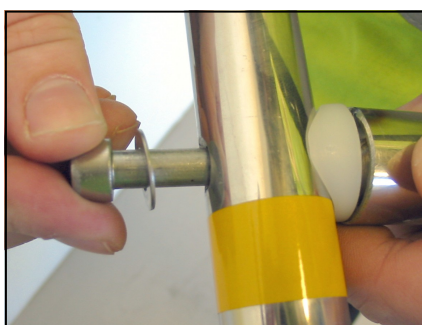
2) Using the front fixing hole as a viewing point, attach the thumb screw to the handle and tighten slightly to hold the handle bar in place.



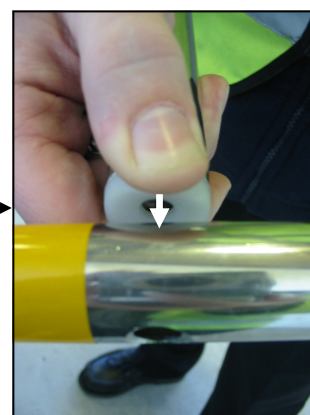
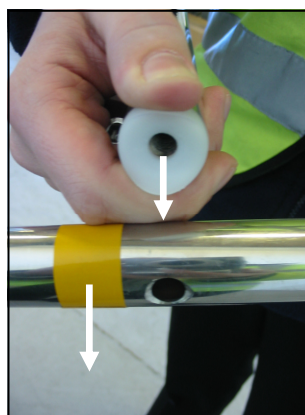
3) Repeat steps 1 and 2 for the opposite handle bar.



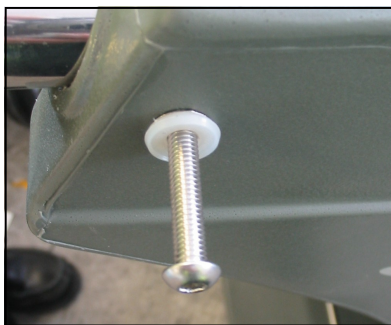
4) Holding the cross bar and a saddle washer together, position them onto the handle bar and attach it using an M8 x 50mm bolt and washer. Tighten using the 6mm allen key.



5) Holding the free end of the cross bar and a saddle washer together, push the handle bar towards the outside wall and position the cross bar onto it. When in position secure the cross bar using an M8 x 50mm screw and washer as in step 4.



6) Place a cover cap ring onto a M6 x 40mm socket button screw and attach into either of the two inserts on the side of the Skipper using the 4mm allen key.



7) Attach a cover cap onto the ring and repeat step 6 for the opposite side.



**PRODUCT COMPLETE**



**Glasdon U.K. Limited**, Preston New Road, Blackpool, Lancashire, FY4 4UL  
Telephone: Sales Enquiries 01253 600410,  
General Enquiries 01253 600400, Fax 01253 792558