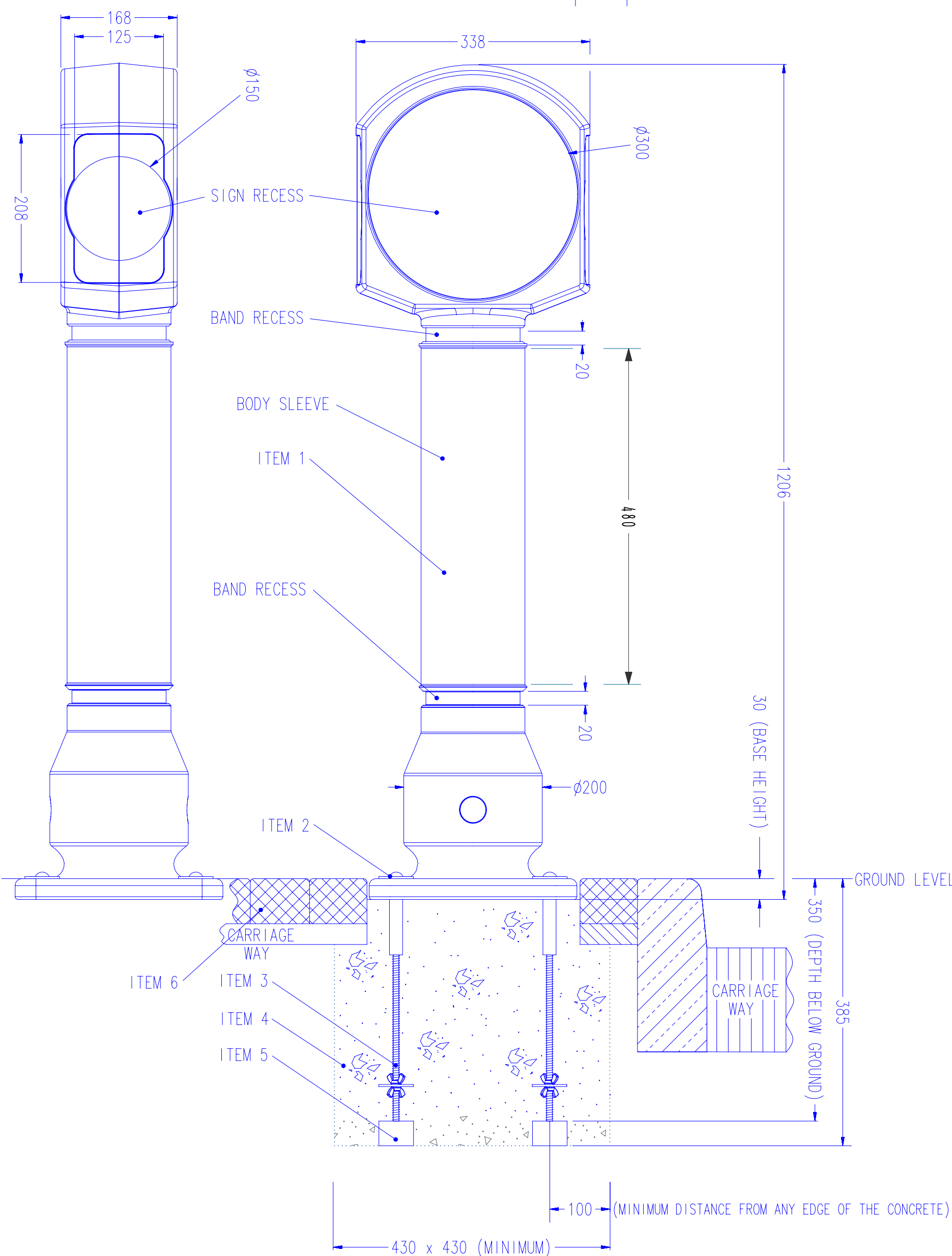
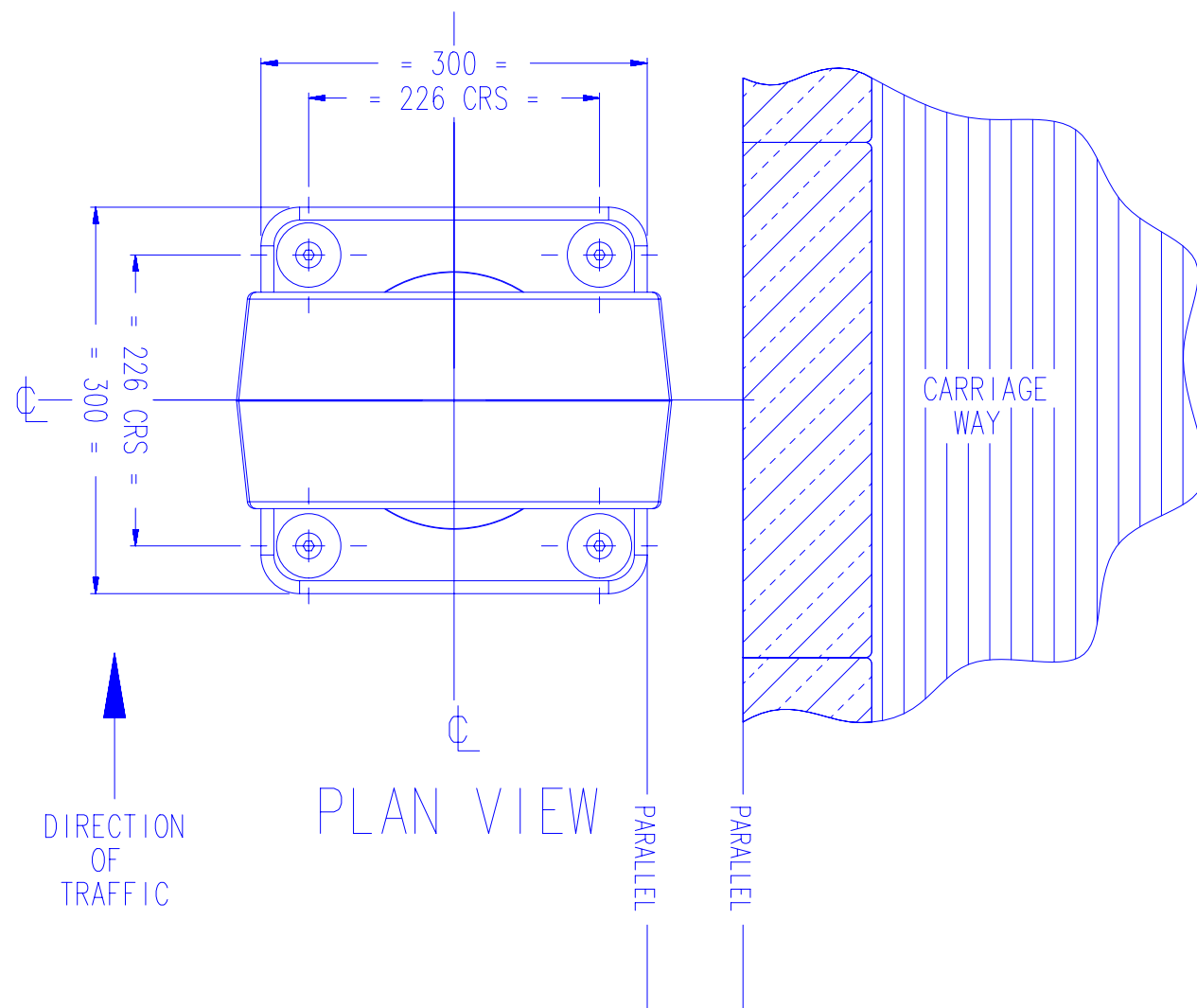


MODEL SPECIFICATION

ENSIGN™ BOLLARD – BOLT DOWN BELOW GROUND ANCHOR



PRODUCT INFORMATION:

- WEIGHT - BOLLARD - 6.0 Kg
- FIXINGS - 1.3 Kg
- TOTAL - 7.3 Kg
- MATERIAL - BOLLARD: - DURAPOL®
- FIXINGS: - SCREWS - STAINLESS STEEL
- WASHERS - STAINLESS STEEL
- SPACERS - RIGID PVC
- CONCRETE-IN FIXING - MS BZP
- COLOURS - BLACK, WHITE, AIRCRAFT GREY, STONE, DARK BLUE, MILLSTONE OR SANDSTONE
- DIMENSIONS - ALL DIMENSIONS IN MM UNLESS OTHERWISE STATED.

INSTALLATION GUIDE:

ITEM 1 - REMOVABLE BOLLARD

ITEM 2 - GROUND FIXINGS (4 OFF):

- M10 x 100mm SOCKET HEAD SCREW
- M10 x ϕ 50 x 3mm WASHER
- M10 x ϕ 19 x 28mm SPACER

ITEM 3 - CONCRETE-IN FIXING (4 OFF):

ITEM 4 - QUICK SETTING CONCRETE (eg. GRADE QC10)

ITEM 5 - SUPPORT BLOCK:

CAN BE ANYTHING SOLID TO ENSURE BOLLARD IS SUPPORTED AT THE CORRECT HEIGHT UNTIL THE CONCRETE HAS SET.

ITEM 6 - BLOCK PAVING:

CAN BE POSITIONED LEVEL WITH THE BOLLARD BASE.

- FIX THE FOUR 'CONCRETE-IN FIXINGS' TO THE BOLLARD BEFORE INSTALLATION, AS THIS WILL ENSURE FIXING CENTRES ARE CORRECT AND PREVENT THE NEED TO REVISIT THE SITE ONCE CONCRETE HAS SET.

- TO ENSURE CORRECT ORIENTATION OF RETROREFLECTIVE BAND(S) THE FOOT OF THE BOLLARD SHOULD BE SITED PARALLEL TO THE CARRIAGE WAY AS SHOWN (SEE PLAN VIEW).

- ENSURE THAT THE RED RETROREFLECTOR FACES TOWARDS ONCOMING TRAFFIC OR YELLOW IF ON A CENTRAL RESERVATION.

- RECOMMENDED MINIMUM HOLE SIZE: 430x430x385mm DEEP.

- IF DEPTH IS RESTRICTED TO LESS THAN 400mm THEN THE 'CONCRETE-IN FIXINGS' CAN BE CUT DOWN IF REQUIRED. HOWEVER WE RECOMMEND USING THE SAME VOLUME OF CONCRETE BY INCREASING THE WIDTH OF THE HOLE TO COMPENSATE.

- AVOID CONTACT WITH HOT TARMACADAM AS THIS WILL SERIOUSLY IMPAIR THE PERFORMANCE OF THE BOLLARD.

- FOR SPEED WE RECOMMEND INSTALLING WITH QUICK SETTING CONCRETE (eg. GRADE QC10) BUT EXACT INSTALLATION REQUIREMENTS SHOULD BE ASSESSED FROM A SITE SURVEY.

OPTIONAL PARTS:

- RETROREFLECTIVE AND NON-REFLECTIVE SIGNFACES ARE AVAILABLE (SEE 11S022-S18 FOR STD SETS)

- ALUMINIUM BACKED RETROREFLECTIVE BANDING (TO BS EN 12899-1:2007, FIXED, VERTICAL ROAD TRAFFIC SIGNS) OR DECORATIVE BANDING MAY BE FITTED.

- STANDARD BANDING SETS:
2 x 19mm BAND (WITHIN TWO BAND RECESSES)
1 x 480mm BODY SLEEVE

- SPARES ARE AVAILABLE, WHICH INCLUDE:

- BOLLARD C/W FIXINGS & RETROREFLECTIVE BANDS
- BOLLARD ONLY
- RANGE OF BANDING
- FIXINGS

- ALL RETROREFLECTIVE MATERIALS SUPPLIED BY GLASDON ARE AS RECOMMENDED IN TABLE NA1 OF THE NATIONAL ANNEX OF BS EN 12899-1 2007 FIXED VERTICAL ROAD SIGNS.



website: www.glasdon.com
e-mail: sales@glasdon.com
Telephone: 01253 600400
Facsimile: 01253 792558

Copyright and/or design right in this representation and the product it depicts is reserved by Glasdon Group Limited. The issue of this drawing, is a confidential disclosure of its contents, and is made on condition that it is neither disclosed to a third party, nor any item described here in and designed by Glasdon Group Limited, is produced either in whole or in part without the written consent of Glasdon Group Limited.

SPECIFICATION NUMBER - 11S022-S20

ISSUE 08

GLASDON GROUP LTD 18/02/15

SHEET SIZE:A2