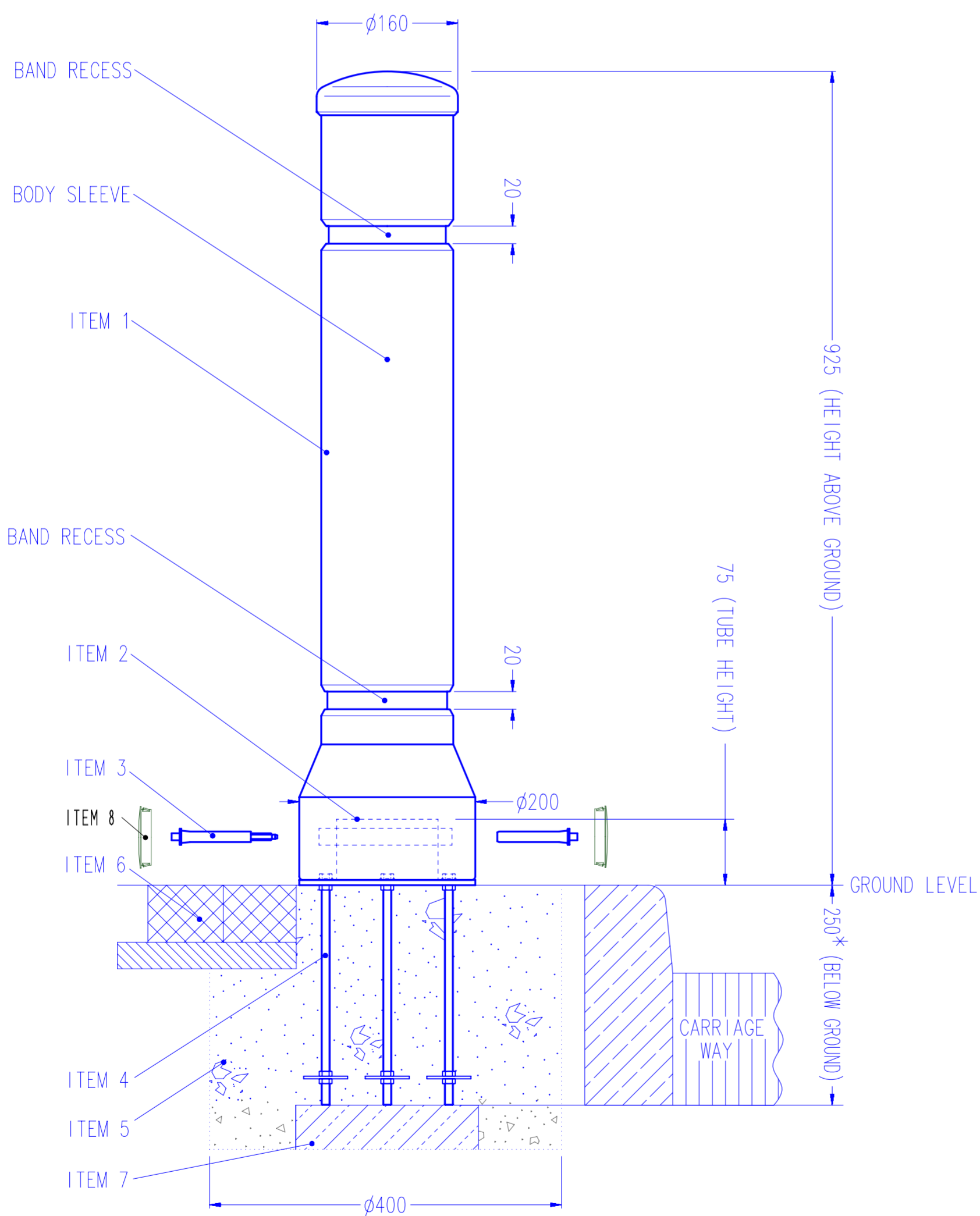
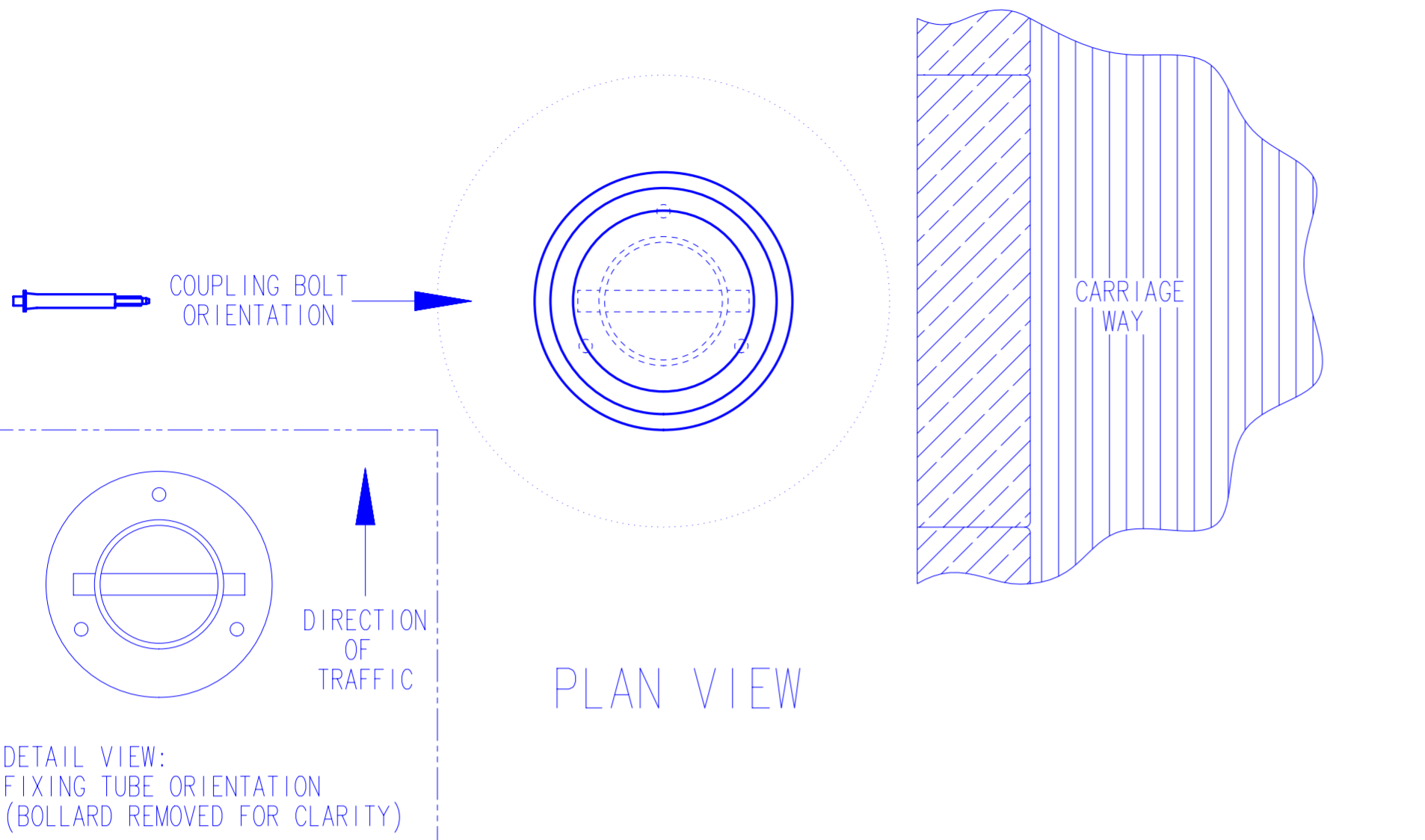


MODEL SPECIFICATION

NEOPOLITAN™ 20 BOLLARD – CONCRETE-IN GROUND ANCHOR



PRODUCT INFORMATION:

- WEIGHT - BOLLARD 3.5 Kg
FIXING TUBE 2.1 Kg
TOTAL 5.6 Kg
- MATERIAL - BOLLARD - DURAPOL®
FIXING TUBE - GALVANIZED MILD STEEL
- COLOURS - MILLSTONE, SANDSTONE, BLACK, AIRCRAFT GREY, STONE, WHITE AND DARK BLUE.
- DIMENSIONS - ALL DIMENSIONS IN MM UNLESS OTHERWISE STATED.

INSTALLATION GUIDE:

- ITEM 1 - REMOVABLE BOLLARD
- ITEM 2 - FIXING TUBE
- ITEM 3 - COUPLING BOLTS
- ITEM 4 - CONCRETE-IN ANCHORS
- ITEM 5 - QUICK SETTING CONCRETE (eg. GRADE QC10)
- ITEM 6 - BLOCK PAVING
- ITEM 7 - PACKING MATERIAL (STONE/BRICK)
- ITEM 8 - GLASDON BADGE HOLE PLUG
- THE SURFACE FIXING TUBE SHOULD BE ORIENTATED SO THAT THE COUPLING BOLT IS INSERTED AT 90° TO THE CARRIAGE WAY (SEE DETAIL VIEW FOR CORRECT ORIENTATION).
- ENSURE REFLECTIVE BANDING IS IN THE CORRECT# ORIENTATION - RED TOWARDS ONCOMING TRAFFIC (YELLOW ON CENTRAL RESERVATION).
- RECOMMENDED HOLE SIZE Ø400mm x 250mm DEEP.
- THE FIXING LENGTH CAN BE ADJUSTED TO SUIT SITING NEEDS AND MAY REQUIRE CUTTING TO AVOID INTERFERENCE WITH THE BOLLARD.
- THIS BOLLARD IS ALSO AVAILABLE WITH SOCKET, SURFACE MOUNT FIXINGS OR GUARDSMAN ANTI-RAM RAID FIXING.
- AVOID CONTACT WITH HOT TARMACADAM AS THIS WILL SERIOUSLY IMPAIR THE PERFORMANCE OF THE BOLLARD.
- WE RECOMMEND INSTALLING WITH QUICK SETTING CONCRETE (eg. GRADE QC10) BUT EXACT INSTALLATION REQUIREMENTS SHOULD BE ASSESSED FROM A SITE SURVEY.

OPTIONAL PARTS:

- ALUMINIUM BACKED RETROREFLECTIVE BANDING (TO BS EN 12899-1:2007, FIXED, VERTICAL ROAD TRAFFIC SIGNS) OR DECORATIVE BANDING MAY BE FITTED.
- STANDARD BANDING SETS:
2 x 20mm BANDS (WITHIN THE 2 BAND RECESSES).
1 x 480mm BODY SLEEVE.
- STANDARD OR SPIKED CHAIN LINKAGE IS AVAILABLE. RECOMMENDED PITCH BETWEEN BOLLARDS 1.1m.
- SPARE BOLLARDS, KEYS AND BANDING ARE AVAILABLE.

ALL RETROREFLECTIVE MATERIALS SUPPLIED BY GLASDON ARE AS RECOMMENDED IN TABLE NAT OF THE NATIONAL ANNEX OF BS EN 12899-1 2007 FIXED VERTICAL ROAD SIGNS.



website: www.glasdon.com
e-mail: sales@glasdon.com
Telephone: 01253 600400
Facsimile: 01253 792558

Copyright and/or design right in this representation and the product it depicts is reserved by Glasdon Group Limited. The issue of this drawing, is a confidential disclosure of its contents, and is made on condition that it is neither disclosed to a third party, nor any item described here in and designed by Glasdon Group Limited, is produced either in whole or in part without the written consent of Glasdon Group Limited.

SPECIFICATION NUMBER - 11S035-501

ISSUE 08

GLASDON GROUP LTD 18/02/15

SHEET SIZE:A2