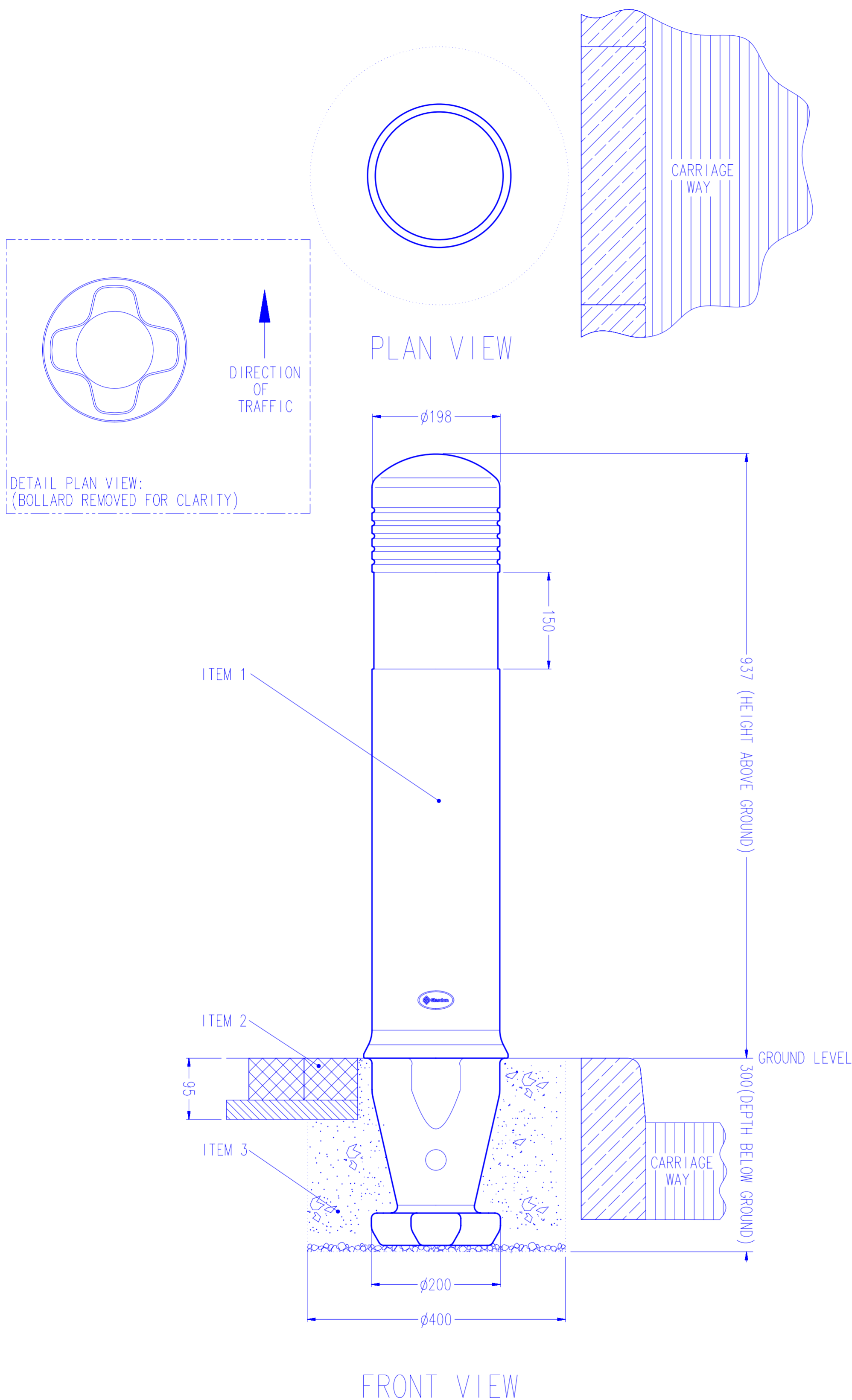


# MODEL SPECIFICATION ADMIRAL™ REBOUND™ BOLLARD



## PRODUCT INFORMATION:

- WEIGHT - BOLLARD 4.0Kg
- MATERIAL - IMPACTAPOL®
- COLOURS - WHITE AND BLACK
- DIMENSIONS - ALL DIMENSIONS IN MM UNLESS OTHERWISE STATED.

- ITEM 1 - BOLLARD
- ITEM 2 - BLOCK PAVING
- ITEM 3 - QUICK SETTING CONCRETE (eg. GRADE QC10)

## TECHNICAL REFERENCE:

- COMPLIES WITH THE 'DEPARTMENT OF TRANSPORT TRAFFIC SIGNS MANUAL, CHAPTER 4, WARNING SIGNS, 2004.'

## INSTALLATION GUIDE:

- ENSURE REFLECTIVE BANDING IS IN THE CORRECT ORIENTATION. RED REFLECTOR FACES ONCOMING TRAFFIC ON THE NEAR-SIDE. WHITE REFLECTOR FACES ONCOMING TRAFFIC ON THE OFF-SIDE.
- RECOMMENDED HOLE SIZE  $\phi 400$ mm x 300mm DEEP.
- AVOID CONTACT WITH HOT TARMACADAM AS THIS WILL SERIOUSLY IMPAIR THE PERFORMANCE OF THE BOLLARD.
- WE RECOMMEND INSTALLING WITH QUICK SETTING CONCRETE (eg. GRADE QC10), BUT EXACT INSTALLATION REQUIREMENTS SHOULD BE ASSESSED FROM A SITE SURVEY.
- ANCHOR BASE ENSURES A SECURE LOCATION.
- A TAPERED BASE SECTION ASSISTS BACKFILL AND GIVES ADDED IMPACT RESISTANCE.
- ANCHOR BASE TO BE POSITIONED IN ORIENTATION SHOWN TO ENSURE CORRECT POSITION.
- SUITABLE FOR HARD AND SOFT GROUND.
- INSTALLATION NOTES -
  - (1) A HOLE APPROXIMATELY THE CORRECT DEPTH IS DUG IN THE POSITION AS SHOWN IN PLAN VIEW.
  - (2) THE ADMIRAL BOLLARD (ANCHOR BASE) IS INSERTED UP TO THE GROUND LEVEL MARK.
  - (3) ENSURE THE BOLLARD REMAINS VERTICAL DURING THE CONCRETE SETTING PERIOD. THE HOLE IS BACK-FILLED IN HARD GROUND WITH QUICK SETTING CONCRETE (eg. GRADE QC10). THE CONCRETE IS FINALLY TAMPED DOWN AND LEVELLED.

## OPTIONAL PARTS:

- IMPACTALIGHT REBOUND RETROREFLECTIVE BANDING (TO BS EN 12899-1:2007, FIXED, VERTICAL ROAD TRAFFIC SIGNS) OR DECORATIVE BANDING MAY BE FITTED.
- ALL RETROREFLECTIVE MATERIALS SUPPLIED BY GLASDON ARE AS RECOMMENDED IN TABLE NA1 OF THE NATIONAL ANNEX OF BS EN 12899-1 2007 FIXED VERTICAL ROAD SIGNS.
- STANDARD BANDING SETS: 1 x 150mm BAND.
- SPARE BOLLARDS AND BANDING ARE AVAILABLE.



website: [www.glasdon.com](http://www.glasdon.com)  
 e-mail: [sales@glasdon.com](mailto:sales@glasdon.com)  
 Telephone: 01253 600400  
 Facsimile: 01253 792558

Copyright and/or design right in this representation and the product it depicts is reserved by Glasdon Group Limited. The issue of this drawing, is a confidential disclosure of its contents, and is made on condition that it is neither disclosed to a third party, nor any item described here in and designed by Glasdon Group Limited, is produced either in whole or in part without the written consent of Glasdon Group Limited.

SPECIFICATION NUMBER - 115043-S01

ISSUE 06

GLASDON GROUP LTD 18/02/15

SHEET SIZE:A2